

Datasheet for ABIN1346829  
**BPGM Protein (AA 1-259) (GST tag)**



[Go to Product page](#)

1 Image

Overview

Quantity:	10 µg
Target:	BPGM
Protein Characteristics:	AA 1-259
Origin:	Human
Source:	Wheat germ
Protein Type:	Recombinant
Purification tag / Conjugate:	This BPGM protein is labelled with GST tag.
Application:	Western Blotting (WB), ELISA, Antibody Array (AA), Affinity Purification (AP)

Product Details

Sequence: MSKYKLIMLR HGEGAWNKEN RFCSWVDQKL NSEGMEEARN CGKQLKALNF EFDLVFTSVL  
NRSIHTAWLI LEELGQEWVP VESSWRLNER HYGALIGLNR EQMALNHGEE QVRLWRRSYN  
VTPPPIEESH PYYQEIYNDR RYKVCVPLD QLPRSESLKD VLERLLPYWN ERIAPEVLRG  
KILISAHGN SSRALLKHLE GISDEDIINI TLPTGVPILL ELDENLRAVG PHQFLGDQEA IQAAIKKVED  
QGKVKQAKK

Target Details

Target:	BPGM
Alternative Name:	BPGM ( <a href="#">BPGM Products</a> )
Background:	Full Gene Name: 2,3-bisphosphoglycerate mutase Synonyms:

## Target Details

---

Gene ID: 669

NCBI Accession: [NP\\_001715, NM\\_001724](#)

## Application Details

---

Application Notes: Optimal working dilution should be determined by the investigator.

Comment: Preparation method: in vitro, wheat germ expression system  
Product Quality tested by: 12.5% SDS-PAGE Stained with Coomassie Blue.

Restrictions: For Research Use only

## Handling

---

Buffer: 50 mM Tris-HCl, 10 mM reduced Glutathione, pH =8.0 in the elution buffer.

Handling Advice: Aliquot to avoid repeated freezing and thawing.

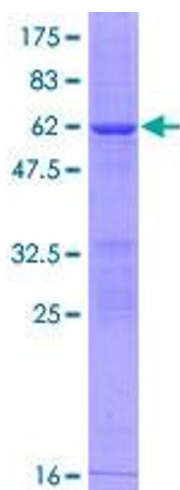
Storage: -80 °C

Storage Comment: Store at -80 °C. Aliquot to avoid repeated freezing and thawing.

Expiry Date: 3 months

## Images

---



**Image 1.**