

Datasheet for ABIN1346836  
**BPIFB6 Protein (AA 1-453) (GST tag)**



[Go to Product page](#)

1 Image

Overview

Quantity:	10 µg
Target:	BPIFB6
Protein Characteristics:	AA 1-453
Origin:	Human
Source:	Wheat germ
Protein Type:	Recombinant
Purification tag / Conjugate:	This BPIFB6 protein is labelled with GST tag.
Application:	ELISA, Western Blotting (WB), Antibody Array (AA), Affinity Purification (AP)

Product Details

Purpose:	BPIL3 (Human) Recombinant Protein (P01)
Sequence:	MLRILCLALC SLLTGTRADP GALLRLGMDI MNQVQSAMDE SHILEKMAAE AGKKQPGMKP IKGITNLKVK DVQLPVITLN FVPGVGIFQC VSTGMTVTGK SFMGGNMEII VALNITATNR LLRDEETGLP VFKSEGCEVI LVNVKTNLPS NMLPKMVNKF LDSTLHKVLP GLMCPAIDAV LVYVNRKWTN LSDPMPVGQM GTVKYVLSA PATTASYIQL DFSPVVQQQK GKTIKLADAG EALTFPEGYA KGSSQLLLPA TFLSAELALL QKSFHVNIQD TMIGELPPQT TKTLARFIPE VAVAYPKSKP LTTQIKIKKP PKVTMKTGKS LLHLHSTLEM FAARWRSKAP MSLFLLEVHF NLKVQYSVHE NQLQMATS LD RLLSLSRKSS SIGNFNEREL TGFITSYLEE AYIPVVNDVL QVGLPLPDFL AMNYNLAELD IVENALMLDL KLG
Characteristics:	Human BPIL3 full-length ORF (AA146465.1, 1 a.a. - 453 a.a.) recombinant protein with GST-tag at N-terminal.

## Product Details

---

Purification: in vitro wheat germ expression system

## Target Details

---

Target: BPIFB6

Alternative Name: BPIL3 ([BPIFB6 Products](#))

Background: Full Gene Name: bactericidal/permeability-increasing protein-like 3  
Synonyms: LPLUNC6

Gene ID: 128859

## Application Details

---

Application Notes: Optimal working dilution should be determined by the investigator.

Comment: Preparation method: in vitro, wheat germ expression system  
Product Quality tested by: 12.5% SDS-PAGE Stained with Coomassie Blue.

Restrictions: For Research Use only

## Handling

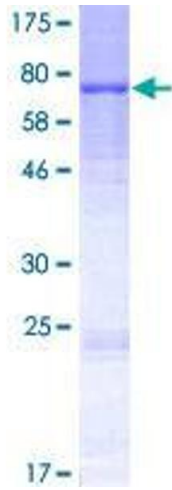
---

Buffer: 50 mM Tris-HCl, 10 mM reduced Glutathione, pH =8.0 in the elution buffer.

Handling Advice: Aliquot to avoid repeated freezing and thawing.

Storage: -80 °C

Storage Comment: Best use within three months from the date of receipt of this protein.



**Image 1.**