



[Go to Product page](#)

Datasheet for ABIN1346854

BRD2 Protein (AA 167-256) (GST tag)

1 Image

Overview

Quantity:	10 µg
Target:	BRD2
Protein Characteristics:	AA 167-256
Origin:	Human
Source:	Wheat germ
Protein Type:	Recombinant
Purification tag / Conjugate:	This BRD2 protein is labelled with GST tag.
Application:	Western Blotting (WB), ELISA, Antibody Array (AA), Affinity Purification (AP)

Product Details

Sequence: QTLEKIFLQK VASMPQEEQE LVVTIPKNSH KKGAKLAALQ GSVTSAHQVP AVSSVSHTAL
YTPPPEIPTT VLNIPHPSVI SSPLLKSLHS

Target Details

Target:	BRD2
Alternative Name:	BRD2 (BRD2 Products)
Background:	Full Gene Name: bromodomain containing 2 Synonyms: D6S113E,DKFZp686N0336,FLJ31942,FSH,FSRG1,KIAA9001,NAT,RING3,RNF3
Gene ID:	6046
NCBI Accession:	NP_005095 , NM_005104

Target Details

Pathways: [Chromatin Binding](#), [SARS-CoV-2 Protein Interactome](#), [The Global Phosphorylation Landscape of SARS-CoV-2 Infection](#)

Application Details

Application Notes: Optimal working dilution should be determined by the investigator.

Comment: Preparation method: in vitro, wheat germ expression system
Product Quality tested by: 12.5% SDS-PAGE Stained with Coomassie Blue.

Restrictions: For Research Use only

Handling

Buffer: 50 mM Tris-HCl, 10 mM reduced Glutathione, pH =8.0 in the elution buffer.

Handling Advice: Aliquot to avoid repeated freezing and thawing.

Storage: -80 °C

Storage Comment: Store at -80 °C. Aliquot to avoid repeated freezing and thawing.

Expiry Date: 3 months

Images

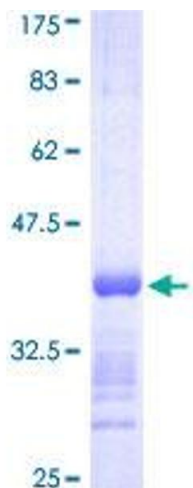


Image 1.