



[Go to Product page](#)

Datasheet for ABIN1346873

## BRI3BP Protein (AA 1-251) (GST tag)

### 1 Image

#### Overview

Quantity:	10 µg
Target:	BRI3BP
Protein Characteristics:	AA 1-251
Origin:	Human
Source:	Wheat germ
Protein Type:	Recombinant
Purification tag / Conjugate:	This BRI3BP protein is labelled with GST tag.
Application:	ELISA, Western Blotting (WB), Antibody Array (AA), Affinity Purification (AP)

#### Product Details

Purpose:	BRI3BP (Human) Recombinant Protein (P01)
Sequence:	MGARASGGPL ARAGLLLLLL LLLLLGLLAP GAQGARGRGG AEKNSYRRTV NTFSQSVSSL FGEDNVRAAQ KFLARLTERF VLGVD MFVET LWKVVTELLD VLGLDVS NLS QYFSPASVSS SPARALLLVG VVLLAYWFLS LTLGFTFSVL HVVFG RFFWI VRVVLFSMSC VYILHKYEGE PENAVLPLCF VVAVYFMTGP MGFYWRSSPS GPSNPSNPSV EEKLEHLEKQ VRLLNIRLNLR VLESLDRSKD K
Characteristics:	Human BRI3BP full-length ORF ( NP_542193.3, 1 a.a. - 251 a.a.) recombinant protein with GST-tag at N-terminal.
Purification:	in vitro wheat germ expression system

## Target Details

Target:	BRI3BP
Alternative Name:	BRI3BP ( <a href="#">BRI3BP Products</a> )
Background:	Full Gene Name: BRI3 binding protein Synonyms: BNAS1,HCCR-2,KG19
Gene ID:	140707
NCBI Accession:	<a href="#">NM_080626</a>

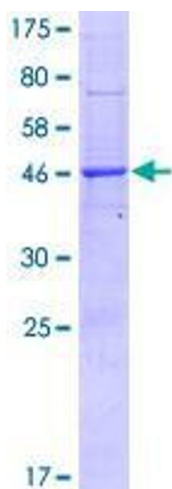
## Application Details

Application Notes:	Optimal working dilution should be determined by the investigator.
Comment:	Preparation method: in vitro, wheat germ expression system Product Quality tested by: 12.5% SDS-PAGE Stained with Coomassie Blue.
Restrictions:	For Research Use only

## Handling

Buffer:	50 mM Tris-HCl, 10 mM reduced Glutathione, pH =8.0 in the elution buffer.
Handling Advice:	Aliquot to avoid repeated freezing and thawing.
Storage:	-80 °C
Storage Comment:	Best use within three months from the date of receipt of this protein.

## Images



**Image 1.**