

Datasheet for ABIN1346885  
**BRS3 Protein (AA 290-399) (GST tag)**



[Go to Product page](#)

1 Image

Overview

Quantity:	10 µg
Target:	BRS3
Protein Characteristics:	AA 290-399
Origin:	Human
Source:	Wheat germ
Protein Type:	Recombinant
Purification tag / Conjugate:	This BRS3 protein is labelled with GST tag.
Application:	ELISA, Western Blotting (WB), Antibody Array (AA), Affinity Purification (AP)

Product Details

Purpose:	BRS3 (Human) Recombinant Protein (Q01)
Sequence:	LYLYHSFTSQ TYVDPSAMHF IFTIFSRVLA FSNSCVNPFA LYWLSKSFQK HFKAQLFCCK AERPEPPVAD TSLTTLAVMG TVPGTGSIQM SEISVTSFTG CSVKQAEDRF
Characteristics:	Human BRS3 partial ORF ( NP_001718, 290 a.a. - 399 a.a.) recombinant protein with GST-tag at N-terminal.
Purification:	in vitro wheat germ expression system

Target Details

Target:	BRS3
Alternative Name:	BRS3 ( <a href="#">BRS3 Products</a> )

## Target Details

Background: Full Gene Name: bombesin-like receptor 3

Synonyms:

Gene ID: 680

NCBI Accession: [NM\\_001727](#)

Pathways: [Feeding Behaviour](#)

## Application Details

Application Notes: Optimal working dilution should be determined by the investigator.

Comment: Preparation method: in vitro, wheat germ expression system  
Product Quality tested by: 12.5% SDS-PAGE Stained with Coomassie Blue.

Restrictions: For Research Use only

## Handling

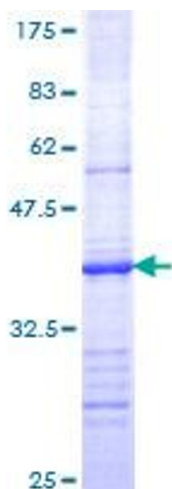
Buffer: 50 mM Tris-HCl, 10 mM reduced Glutathione, pH =8.0 in the elution buffer.

Handling Advice: Aliquot to avoid repeated freezing and thawing.

Storage: -80 °C

Storage Comment: Best use within three months from the date of receipt of this protein.

## Images



**Image 1.**