

Datasheet for ABIN1346920

BTAF1 Protein (AA 1750-1849) (GST tag)



[Go to Product page](#)

1 Image

Overview

Quantity:	10 µg
Target:	BTAF1
Protein Characteristics:	AA 1750-1849
Origin:	Human
Source:	Wheat germ
Protein Type:	Recombinant
Purification tag / Conjugate:	This BTAF1 protein is labelled with GST tag.
Application:	Antibody Array (AA), Affinity Purification (AP), ELISA, Western Blotting (WB)

Product Details

Purpose:	BTAF1 (Human) Recombinant Protein (Q01)
Sequence:	NVYRLITRGT LEEKIMGLQK FKMNIANTVI SQENSSLQSM GTDQLLDLFT LDKDGKAEKA DTSTSGKASM KSILENLSDL WDQEQYDSEY SLENFMHSLK
Characteristics:	Human BTAF1 partial ORF (NP_003963, 1750 a.a. - 1849 a.a.) recombinant protein with GST-tag at N-terminal.
Purification:	in vitro wheat germ expression system

Target Details

Target:	BTAF1
Alternative Name:	BTAF1 (BTAF1 Products)

Target Details

Background:	Full Gene Name: BTAF1 RNA polymerase II, B-TFIID transcription factor-associated, 170 kDa (Mot1 homolog, <i>S. cerevisiae</i>) Synonyms: KIAA0940,MGC138406,MOT1,TAF(II)170,TAF172,TAFII170
Gene ID:	9044
NCBI Accession:	NM_003972

Application Details

Application Notes:	Optimal working dilution should be determined by the investigator.
Comment:	Preparation method: in vitro, wheat germ expression system Product Quality tested by: 12.5% SDS-PAGE Stained with Coomassie Blue.
Restrictions:	For Research Use only

Handling

Buffer:	50 mM Tris-HCl, 10 mM reduced Glutathione, pH =8.0 in the elution buffer.
Handling Advice:	Aliquot to avoid repeated freezing and thawing.
Storage:	-80 °C
Storage Comment:	Best use within three months from the date of receipt of this protein.

Images

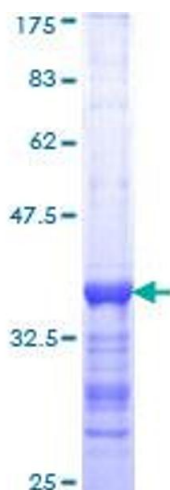


Image 1.