



[Go to Product page](#)

Datasheet for ABIN1346925

BTBD11 Protein (AA 1-183) (GST tag)

1 Image

Overview

Quantity:	10 µg
Target:	BTBD11
Protein Characteristics:	AA 1-183
Origin:	Human
Source:	Wheat germ
Protein Type:	Recombinant
Purification tag / Conjugate:	This BTBD11 protein is labelled with GST tag.
Application:	ELISA, Western Blotting (WB), Antibody Array (AA), Affinity Purification (AP)

Product Details

Purpose:	BTBD11 (Human) Recombinant Protein (P01)
Sequence:	MSDVTFLVEG RPFYAHKVLV FTASPRFKAL LSSKPTNDGT CIEIGYVKYS IFQLVMQYLY YGGPESLLIK NNEIMELLSA AKFFQLEALQ RHCEIICAKS INTDNCVDIY NHAKFLGVTE LSAYCEGYFL KNMMVLIENE AFKQLLYDKN GEGTGQDVLQ DLQRTLAIIRI QSIHLSSSKG SVV
Characteristics:	Human BTBD11 full-length ORF (NP_689535.2, 1 a.a. - 183 a.a.) recombinant protein with GST-tag at N-terminal.
Purification:	in vitro wheat germ expression system

Target Details

Target:	BTBD11
Alternative Name:	BTBD11 (BTBD11 Products)

Target Details

Background: Full Gene Name: BTB (POZ) domain containing 11
Synonyms: FLJ33957,FLJ42845

Gene ID: 121551

NCBI Accession: [NM_152322](#)

Application Details

Application Notes: Optimal working dilution should be determined by the investigator.

Comment: Preparation method: in vitro, wheat germ expression system
Product Quality tested by: 12.5% SDS-PAGE Stained with Coomassie Blue.

Restrictions: For Research Use only

Handling

Buffer: 50 mM Tris-HCl, 10 mM reduced Glutathione, pH =8.0 in the elution buffer.

Handling Advice: Aliquot to avoid repeated freezing and thawing.

Storage: -80 °C

Storage Comment: Best use within three months from the date of receipt of this protein.

Images

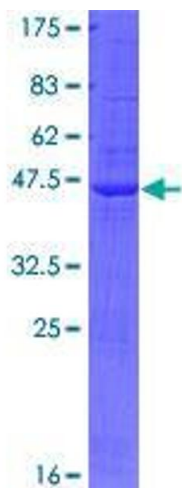


Image 1.