



[Go to Product page](#)

Datasheet for ABIN1346964

BTN1A1 Protein (AA 482-526) (GST tag)

1 Image

Overview

Quantity:	10 µg
Target:	BTN1A1
Protein Characteristics:	AA 482-526
Origin:	Human
Source:	Wheat germ
Protein Type:	Recombinant
Purification tag / Conjugate:	This BTN1A1 protein is labelled with GST tag.
Application:	Western Blotting (WB), ELISA, Antibody Array (AA), Affinity Purification (AP)

Product Details

Purpose:	BTN1A1 (Human) Recombinant Protein (Q02)
Sequence:	VTVIANAQDL SKEIPLSPMG EDSAPRDADT LHSKLIPTQP SQGAP
Characteristics:	Human BTN1A1 partial ORF (NP_001723.2, 482 a.a. - 526 a.a.) recombinant protein with GST-tag at N-terminal.
Purification:	in vitro wheat germ expression system

Target Details

Target:	BTN1A1
Alternative Name:	BTN1A1 (BTN1A1 Products)
Background:	Gene: butyrophilin, subfamily 1, member A1

Target Details

Synonyms: BT, BTN

Gene ID: 696

NCBI Accession: [NM_001732](#)

Pathways: [Activated T Cell Proliferation](#)

Application Details

Application Notes: Optimal working dilution should be determined by the investigator.

Restrictions: For Research Use only

Handling

Buffer: 50 mM Tris-HCl, 10 mM reduced Glutathione, pH =8.0 in the elution buffer.

Handling Advice: Aliquot to avoid repeated freezing and thawing.

Storage: -80 °C

Storage Comment: Best use within three months from the date of receipt of this protein.

Images

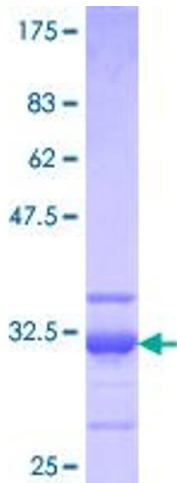


Image 1.