

Datasheet for ABIN1346968
BTN2A1 Protein (AA 1-334) (GST tag)



[Go to Product page](#)

1 Image

Overview

Quantity:	10 µg
Target:	BTN2A1
Protein Characteristics:	AA 1-334
Origin:	Human
Source:	Wheat germ
Protein Type:	Recombinant
Purification tag / Conjugate:	This BTN2A1 protein is labelled with GST tag.
Application:	Western Blotting (WB), ELISA, Affinity Purification (AP), Antibody Array (AA)

Product Details

Purpose:	BTN2A1 (Human) Recombinant Protein (P01)
Sequence:	MESAAALHFS RPASLLLLLL SLCALVSAQF IVVGPTDPIL ATVGENTTLR CHLSPEKNAE DMEVRWFRSQ FSPA VFVYKG GREERTEEQME EYRGRTTFVS KDISRGSVAL VIHNTAQEN GTYRCYFQEG RSYDEAILHL VVAGLGSKPL ISMRGHEDGG IRLECISRGW YPKPLTVWRD PYGGVAPALK EVSMPDADGL FMVTTAVIIR DKSVRNMSCS INNTLLGQKK ESVIFIPESF MPSVSPCAVA LPIIVVILMI PIAVCIYWIN KLQKEKKILS GEKEFERETR EIALKELEKE RVQKEEELQV KEKLQEELRW RRTFLHAELQ FFSN
Characteristics:	Human BTN2A1 full-length ORF (AAH16661, 1 a.a. - 334 a.a.) recombinant protein with GST-tag at N-terminal.
Purification:	in vitro wheat germ expression system

Target Details

Target:	BTN2A1
Alternative Name:	BTN2A1 (BTN2A1 Products)
Background:	Full Gene Name: butyrophilin, subfamily 2, member A1 Synonyms: BK14H9.1,BT2.1,BTF1,DJ3E1.1,FLJ36567
Gene ID:	11120
Pathways:	Activated T Cell Proliferation

Application Details

Application Notes:	Optimal working dilution should be determined by the investigator.
Comment:	Preparation method: in vitro, wheat germ expression system Product Quality tested by: 12.5% SDS-PAGE Stained with Coomassie Blue.
Restrictions:	For Research Use only

Handling

Buffer:	50 mM Tris-HCl, 10 mM reduced Glutathione, pH =8.0 in the elution buffer.
Handling Advice:	Aliquot to avoid repeated freezing and thawing.
Storage:	-80 °C
Storage Comment:	Best use within three months from the date of receipt of this protein.

Images

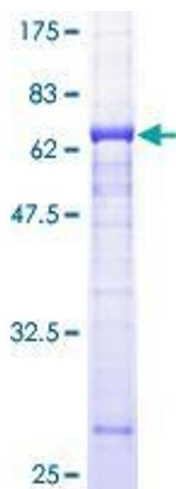


Image 1.