

Datasheet for ABIN1346975
BTNL3 Protein (AA 1-466) (GST tag)



[Go to Product page](#)

1 Image

Overview

| | |
|-------------------------------|---|
| Quantity: | 10 µg |
| Target: | BTNL3 |
| Protein Characteristics: | AA 1-466 |
| Origin: | Human |
| Source: | Wheat germ |
| Protein Type: | Recombinant |
| Purification tag / Conjugate: | This BTNL3 protein is labelled with GST tag. |
| Application: | ELISA, Western Blotting (WB), Antibody Array (AA), Affinity Purification (AP) |

Product Details

| | |
|------------------|---|
| Purpose: | BTNL3 (Human) Recombinant Protein (P01) |
| Sequence: | MAFVLILVLS FYELVSGQWQ VTGPGKFVQA LVGEDAVFSC SLFPETSAEA MEVRFFRNQF HAVVHLYRDG EDWESKQMPQ YRGRTEFVKD SIAGGRVSLR LKNITPSDIG LYGCWFSSQI YDEEATWELR VAALGSLPLI SIVGYVDGGI QLLCLSSGWF PQPTAKWKGP QGQDLSSDSR ANADGYSLYD VEISIIVQEN AGSILCSIHL AEQSHEVESK VLIGETFFQP SPWRLASILL GLLCGALCGV VMGMIIVFFK SKGKIQAELD WRRKHGQAE RDARKHAVEV TLDPETAHPK LCVSDLKTVT HRKAPQEVPH SEKRFRTRKSV VASQGFQAGK HYWEVDVGQN VGWYVGVCRD DVDRGKNNVT LSPNNGYWVL RLTTHELYFT FNPHFISLPP STPPTRVGVF LDYEGGTISF FNTNDQSLIY TLLTCQFEGL LRPYIQHAMY DEEKGTPIFI CPVSWG |
| Characteristics: | Human BTNL3 full-length ORF (NP_932079.1, 1 a.a. - 466 a.a.) recombinant protein with GST-tag at N-terminal. |

Product Details

Purification: in vitro wheat germ expression system

Target Details

Target: BTNL3

Alternative Name: BTNL3 ([BTNL3 Products](#))

Background: Full Gene Name: butyrophilin-like 3
Synonyms: BTNLR

Gene ID: 10917

NCBI Accession: [NM_197975](#)

Application Details

Application Notes: Optimal working dilution should be determined by the investigator.

Comment: Preparation method: in vitro, wheat germ expression system
Product Quality tested by: 12.5% SDS-PAGE Stained with Coomassie Blue.

Restrictions: For Research Use only

Handling

Buffer: 50 mM Tris-HCl, 10 mM reduced Glutathione, pH =8.0 in the elution buffer.

Handling Advice: Aliquot to avoid repeated freezing and thawing.

Storage: -80 °C

Storage Comment: Best use within three months from the date of receipt of this protein.

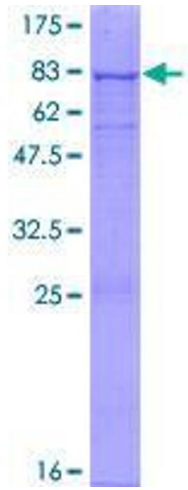


Image 1.