



[Go to Product page](#)

Datasheet for ABIN1346977

BTNL3 Protein (AA 367-466) (GST tag)

1 Image

Overview

Quantity:	10 µg
Target:	BTNL3
Protein Characteristics:	AA 367-466
Origin:	Human
Source:	Wheat germ
Protein Type:	Recombinant
Purification tag / Conjugate:	This BTNL3 protein is labelled with GST tag.
Application:	ELISA, Western Blotting (WB), Antibody Array (AA), Affinity Purification (AP)

Product Details

Sequence: NNVTLSPNNG YWVLRLLTTEH LYFTFNPHFI SLPPSTPPTR VGVFLDYEGG TISFFNTNDQ
SLIYTLTTCQ FEGLLRPIYQ HAMYDEEKGT PIFICPVSWG

Target Details

Target:	BTNL3
Alternative Name:	BTNL3 (BTNL3 Products)
Background:	Full Gene Name: butyrophilin-like 3 Synonyms: BTNLR
Gene ID:	10917
NCBI Accession:	NP_932079 , NM_197975

Application Details

Application Notes:	Optimal working dilution should be determined by the investigator.
Comment:	Preparation method: in vitro, wheat germ expression system Product Quality tested by: 12.5% SDS-PAGE Stained with Coomassie Blue.
Restrictions:	For Research Use only

Handling

Buffer:	50 mM Tris-HCl, 10 mM reduced Glutathione, pH =8.0 in the elution buffer.
Handling Advice:	Aliquot to avoid repeated freezing and thawing.
Storage:	-80 °C
Storage Comment:	Store at -80 °C. Aliquot to avoid repeated freezing and thawing.
Expiry Date:	3 months

Images

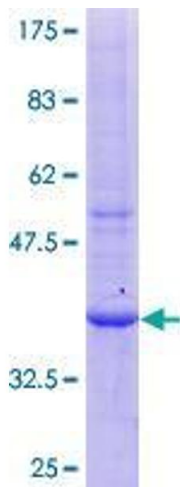


Image 1.