

Datasheet for ABIN1346994
BUD31 Protein (AA 35-144) (GST tag)



[Go to Product page](#)

1 Image

Overview

Quantity:	10 µg
Target:	BUD31
Protein Characteristics:	AA 35-144
Origin:	Human
Source:	Wheat germ
Protein Type:	Recombinant
Purification tag / Conjugate:	This BUD31 protein is labelled with GST tag.
Application:	ELISA, Western Blotting (WB), Antibody Array (AA), Affinity Purification (AP)

Product Details

Purpose:	G10 (Human) Recombinant Protein (Q01)
Sequence:	EPHEGKRKVE SLWPIFRIHH QKTRYIFDLF YKRKAISREL YEYCIKEGYA DKNLIAKWKK QGYENLCLLR CIQTRDTNFG TNCICRVPKS KLEVGRRIEC THCGCRGCSG
Characteristics:	Human G10 partial ORF (NP_003901, 35 a.a. - 144 a.a.) recombinant protein with GST-tag at N-terminal.
Purification:	in vitro wheat germ expression system

Target Details

Target:	BUD31
Alternative Name:	BUD31 (BUD31 Products)

Target Details

Background:	Full Gene Name: BUD31 homolog (<i>S. cerevisiae</i>) Synonyms: EDG-2,EDG2,G10,MGC111202,YCR063W,fSAP17
Gene ID:	8896
NCBI Accession:	NM_003910

Application Details

Application Notes:	Optimal working dilution should be determined by the investigator.
Comment:	Preparation method: in vitro, wheat germ expression system Product Quality tested by: 12.5% SDS-PAGE Stained with Coomassie Blue.
Restrictions:	For Research Use only

Handling

Buffer:	50 mM Tris-HCl, 10 mM reduced Glutathione, pH =8.0 in the elution buffer.
Handling Advice:	Aliquot to avoid repeated freezing and thawing.
Storage:	-80 °C
Storage Comment:	Best use within three months from the date of receipt of this protein.

Images

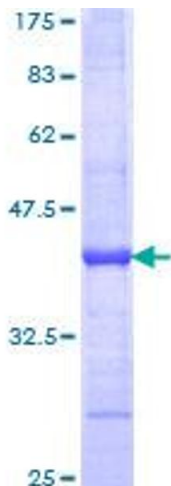


Image 1.