



[Go to Product page](#)

Datasheet for ABIN1347000
RPF2 Protein (AA 1-306) (GST tag)

1 Image

Overview

Quantity:	25 µg
Target:	RPF2
Protein Characteristics:	AA 1-306
Origin:	Human
Source:	Wheat germ
Protein Type:	Recombinant
Purification tag / Conjugate:	This RPF2 protein is labelled with GST tag.
Application:	ELISA, Western Blotting (WB), Antibody Array (AA), Affinity Purification (AP)

Product Details

Purpose:	BXDC1 (Human) Recombinant Protein (P01)
Sequence:	MDTLDRVWKP KTKRAKRFLK KREPKNENI KNAMLIKGGN ANATVTKVLK DVYALKKPYG VLYKKKNITR PFEDQTSLEF FSKKSDCSLF MFGSHNKKRP NNLVIGRMYD YHVLDMIELG IENFVSLKDI KNSKCEPGTK PMLIFAGDDF DVTEDYRRLK SLLIDFFRGP TVSNIRLAGL EYVLHFTALN GKIYFRSYKL LLKKSGCRTP RIELEEMGPS LDLVLRRTHL ASDDLYKLSM KMPKALKPKK KKNISHDTFG TTYGRIHMQK QDLSKLQTRK MKGLKKRPAE RITEDHEKKS KRIKKN
Characteristics:	Human BXDC1 full-length ORF (NP_115570.1, 1 a.a. - 306 a.a.) recombinant protein with GST-tag at N-terminal.
Purification:	in vitro wheat germ expression system

Target Details

Target:	RPF2
Alternative Name:	BXDC1 (RPF2 Products)
Background:	Full Gene Name: brix domain containing 1 Synonyms: FLJ21087,RPF2,bA397G5.4
Gene ID:	84154
NCBI Accession:	NM_032194
Pathways:	Ribonucleoprotein Complex Subunit Organization , Ribosome Assembly

Application Details

Application Notes:	Optimal working dilution should be determined by the investigator.
Comment:	Preparation method: in vitro, wheat germ expression system Product Quality tested by: 12.5% SDS-PAGE Stained with Coomassie Blue.
Restrictions:	For Research Use only

Handling

Buffer:	50 mM Tris-HCl, 10 mM reduced Glutathione, pH =8.0 in the elution buffer.
Handling Advice:	Aliquot to avoid repeated freezing and thawing.
Storage:	-80 °C
Storage Comment:	Best use within three months from the date of receipt of this protein.

Images

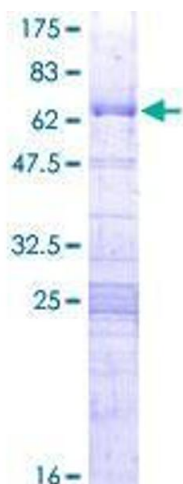


Image 1.