



[Go to Product page](#)

Datasheet for ABIN1347012

C10orf118 Protein (AA 1-211) (GST tag)

1 Image

Overview

Quantity:	25 µg
Target:	C10orf118
Protein Characteristics:	AA 1-211
Origin:	Human
Source:	Wheat germ
Protein Type:	Recombinant
Purification tag / Conjugate:	This C10orf118 protein is labelled with GST tag.
Application:	Antibody Array (AA), Affinity Purification (AP), ELISA, Western Blotting (WB)

Product Details

Purpose:	C10orf118 (Human) Recombinant Protein (P01)
Sequence:	MSETDHIASSTSSDKNVGKTP ELKEDSCNLF SGNESKLEN ESKLLSLNTD KTL CQPNEHN NRIEAQENYI PDHGGGEDSC AKTDTGSENS EQIANFPSGN FAKHISK TNE TEQKVTQILV ELRSSTFPES ANEKTYSESP YDTDCTKKFI SKIKSVSASE DLLEEIESEL LSTEF AEHRV PNGM NKGEHA LVLFEKCVQD KYLQ QEHIK K
Characteristics:	Human C10orf118 full-length ORF (AAH30557.1, 1 a.a. - 211 a.a.) recombinant protein with GST tag at N-terminal.
Purification:	in vitro wheat germ expression system

Target Details

Target:	C10orf118
---------	-----------

Target Details

Alternative Name:	C10orf118 (C10orf118 Products)
Background:	Full Gene Name: chromosome 10 open reading frame 118 Synonyms: FLJ10188,FLJ35301,MGC118918,MGC129699
Gene ID:	55088

Application Details

Application Notes:	Optimal working dilution should be determined by the investigator.
Comment:	Preparation method: in vitro, wheat germ expression system Product Quality tested by: 12.5% SDS-PAGE Stained with Coomassie Blue
Restrictions:	For Research Use only

Handling

Buffer:	50 mM Tris-HCl, 10 mM reduced Glutathione, pH =8.0 in the elution buffer.
Handling Advice:	Aliquot to avoid repeated freezing and thawing.
Storage:	-80 °C
Storage Comment:	Best use within three months from the date of receipt of this protein.

Images

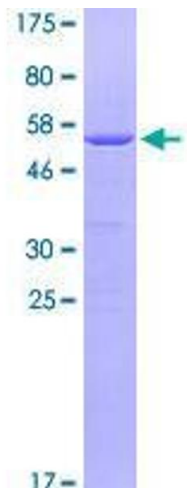


Image 1.