

Datasheet for ABIN1347041
C10orf88 Protein (AA 1-445) (GST tag)



[Go to Product page](#)

1 Image

Overview

Quantity:	10 µg
Target:	C10orf88
Protein Characteristics:	AA 1-445
Origin:	Human
Source:	Wheat germ
Protein Type:	Recombinant
Purification tag / Conjugate:	This C10orf88 protein is labelled with GST tag.
Application:	ELISA, Western Blotting (WB), Antibody Array (AA), Affinity Purification (AP)

Product Details

Purpose:	C10orf88 (Human) Recombinant Protein (P01)
Sequence:	METRTEDGGL TRRPTLASSW DVAGGALTHS LLLTRAGLGP GDFDWEELLA PPAPGQDLVI LKRNHNNKDE NPCFLYLRCG PDGGEEIASI GILSSARNME VYLGE EYCGT SRGKNVCTVL DDSEHEKIIL YKKNLKLESS THACKIKLLS FGERQCVFIS KVVVHMRSVF ANSSTSSPAL GSRIDLDKVQ TIMESMGSKL SPGAQQLMDM VRCQQRNCIP IGEQLQSVLG NSGYKHMIGL QSSSTLGTLN KSSSTPF PFR TGLTSGNVTE NLQTYIDKST QLPGENSTK LDECKVMPQN HSFLENDLKN AMASFLPKKV SDNSNIPNSE LLPFLQNLCS QVNHLHVG NK TECQENITKH GERILGVGME EQSICSYLEK ILSKNMELME KKLMDYIDQR IH ELQEHIDD KIALLLDLLQ NPNSPPTGIP LRHYDSGERL SNGER
Characteristics:	Human C10orf88 full-length ORF (AAH32645.1, 1 a.a. - 445 a.a.) recombinant protein with GST-tag at N-terminal.

Product Details

Purification: in vitro wheat germ expression system

Target Details

Target: C10orf88

Alternative Name: C10orf88 ([C10orf88 Products](#))

Background: Full Gene Name: chromosome 10 open reading frame 88
Synonyms: FLJ13490

Gene ID: 80007

Application Details

Application Notes: Optimal working dilution should be determined by the investigator.

Comment: Preparation method: in vitro, wheat germ expression system
Product Quality tested by: 12.5% SDS-PAGE Stained with Coomassie Blue.

Restrictions: For Research Use only

Handling

Buffer: 50 mM Tris-HCl, 10 mM reduced Glutathione, pH =8.0 in the elution buffer.

Handling Advice: Aliquot to avoid repeated freezing and thawing.

Storage: -80 °C

Storage Comment: Best use within three months from the date of receipt of this protein.

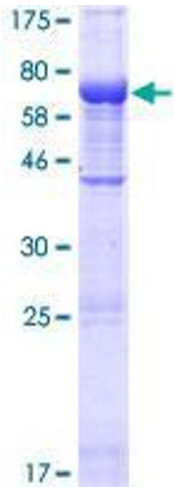


Image 1.