



[Go to Product page](#)

Datasheet for ABIN1347044

C10ORF91 Protein (AA 1-145) (GST tag)

1 Image

Overview

Quantity:	10 µg
Target:	C10ORF91
Protein Characteristics:	AA 1-145
Origin:	Human
Source:	Wheat germ
Protein Type:	Recombinant
Purification tag / Conjugate:	This C10ORF91 protein is labelled with GST tag.
Application:	ELISA, Western Blotting (WB), Antibody Array (AA), Affinity Purification (AP)

Product Details

Purpose:	C10orf91 (Human) Recombinant Protein (P01)
Sequence:	MWSFLPGAES VSMGPVPGVS SLGACWTHDQ DSGRAEDRPQ APRITQYTWV LSFLFTEKPQ TRSTSPISHQ GQPQTTRALS LRQPQHPSAP ASGRPRPPHS SGPDLAEEAP VVDQASQAAG RASSGLGLWE QASVSQGFRN AAFAE
Characteristics:	Human C10orf91 full-length ORF (NP_775812.1, 1 a.a. - 145 a.a.) recombinant protein with GST tag at N-terminal.
Purification:	in vitro wheat germ expression system

Target Details

Target:	C10ORF91
Alternative Name:	C10orf91 (C10ORF91 Products)

Target Details

Background:	Full Gene Name: chromosome 10 open reading frame 91 Synonyms: RP11-432J24.4,bA432J24.4
Gene ID:	170393
NCBI Accession:	NM_173541

Application Details

Application Notes:	Optimal working dilution should be determined by the investigator.
Comment:	Preparation method: in vitro, wheat germ expression system Product Quality tested by: 12.5% SDS-PAGE Stained with Coomassie Blue
Restrictions:	For Research Use only

Handling

Buffer:	50 mM Tris-HCl, 10 mM reduced Glutathione, pH =8.0 in the elution buffer.
Handling Advice:	Aliquot to avoid repeated freezing and thawing.
Storage:	-80 °C
Storage Comment:	Best use within three months from the date of receipt of this protein.

Images

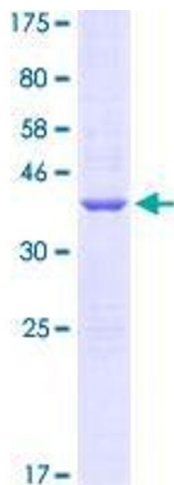


Image 1.