

Datasheet for ABIN1347053  
**C11ORF16 Protein (AA 1-404) (GST tag)**



[Go to Product page](#)

1 Image

Overview

Quantity:	25 µg
Target:	C11ORF16
Protein Characteristics:	AA 1-404
Origin:	Human
Source:	Wheat germ
Protein Type:	Recombinant
Purification tag / Conjugate:	This C11ORF16 protein is labelled with GST tag.
Application:	ELISA, Western Blotting (WB), Antibody Array (AA), Affinity Purification (AP)

Product Details

Purpose:	C11orf16 (Human) Recombinant Protein (P01)
Sequence:	MESSTGPRMP LLKYCSVATS LKAPGWDGAA PPWDLSTFTYP FALQAPWLTG HKPLARHASS CPCLHVADPA WQPGWLGRA GDAANTWVLA RREADGFYR AQIKATPELE RQGVLLVEFE APLVAGPKLP AQQQRVVLEE DVIPLSPSVG YSLRPGDKVL ALWEPGQQQY GPGTVLLGLE MRDPQRASKE KEITVHFWNG KAAKVPLGGV QSVSLTIWKK AVERLHKSFT REHPRPLHWA PCCSLLGPIT GRITNELPPD APFLCPLCHH HACCQLLCQG CLCGPPCGT TWWPLTRTSE VMARELPELE ATAQLLPLEG PKEEKVAMHA PLAVSSSSSS SCEQDGVEND LEMGPPQRLM VNSAVNTDPI FLEMPLRQSG LCQPEWRYWK RNGPEPCPGK PGKE
Characteristics:	Human C11orf16 full-length ORF (AAH27865.1, 1 a.a. - 404 a.a.) recombinant protein with GST tag at N-terminal.
Purification:	in vitro wheat germ expression system

## Target Details

Target:	C11ORF16
Alternative Name:	C11orf16 ( <a href="#">C11ORF16 Products</a> )
Background:	Full Gene Name: chromosome 11 open reading frame 16 Synonyms:
Gene ID:	56673

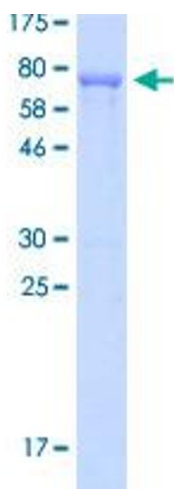
## Application Details

Application Notes:	Optimal working dilution should be determined by the investigator.
Comment:	Preparation method: in vitro, wheat germ expression system Product Quality tested by: 12.5% SDS-PAGE Stained with Coomassie Blue
Restrictions:	For Research Use only

## Handling

Buffer:	50 mM Tris-HCl, 10 mM reduced Glutathione, pH =8.0 in the elution buffer.
Handling Advice:	Aliquot to avoid repeated freezing and thawing.
Storage:	-80 °C
Storage Comment:	Best use within three months from the date of receipt of this protein.

## Images



**Image 1.**