



[Go to Product page](#)

Datasheet for ABIN1347091

NAA25 Protein (AA 1-972) (GST tag)

1 Image

Overview

Quantity:	25 µg
Target:	NAA25
Protein Characteristics:	AA 1-972
Origin:	Human
Source:	Wheat germ
Protein Type:	Recombinant
Purification tag / Conjugate:	This NAA25 protein is labelled with GST tag.
Application:	ELISA, Western Blotting (WB), Antibody Array (AA), Affinity Purification (AP)

Product Details

Purpose:	C12orf30 (Human) Recombinant Protein (P01)
Sequence:	MATRGHVQDP NDRRLRPIYD YLDNGNNKMA IQQADKLLKK HKDLHCAKVL KAIGLQRTGK QEEAFTLAQE VAALEPTDDN SLQALTILYR EMHRPELVTK LYEA AVKKVP NSEEHSHLF MAYARVGEYK KMQQAGMALY KIVPKNPYYF WSVMSLIMQS ISAQDENLSK TMFLPLAERM VEKMKVEDKI EAEAEVELYY MILERLGKYQ EALDVIRGKL GEKLTSEIQS RENKCMAMYK KLSRWPECNA LSRRLLLKNS DDWQFYLYTF DSVFRLIEEA WSPPAEGEHS LEDEVHYSAE KAVKFIEDRI TEESKSSRHL RGPLHLAKLEL IRRLSQGCN DEYKLGDPPE LMFQYFKKFG DKPCCFTDLK VFDLLPATQ CTKFINQLLG VVPLSTPTED KLALPADIRA LQQLCVVQL TRLLGLYHTM DKNQKLSVVR ELMLRYQHGL EFGKTCLKTE LQFSDYYCLL AVHALIDVWR ETGDETTVWQ ALTLLEGLT HSPSNAQFKL LLVRIYCM LG AFEPVVDLYS SLD AKHIQHD TIGYLLTRYA ESLGQYAAAS QSCNFALRFF HSNQKDTSEY IIQAYKYGAF EKIEPIAFR NRLNNSLHFA QVRTERMLLD LLLLEANISTS LAESIKSMNL RPEEDDIPWE DLRDNRDLNV

Product Details

FFSWDPKDRD VSEEHKKLSL EEETLWLRIR SLTLRLISGL PSLNHPVEPK NSEKTAENGV
SSRIDILRL LQLEATLET GKRFIEKDIQ YPFLGPVPTR MGGFFNSGCS QCQISSFYLV
NDIYELDTSG LEDTMEIQER IENFSKSLLD QLKDVFSKCK GDLLEVKDG N LKTHPTLLEN
LVFFVETISV ILWSSYCES VLRPYKLNQ KKKKKKKETS IIMPPVFTSF QDYVTGLQTL
ISNVVDHIKG LETHLIALKL EELILEDTS L SPEERKFSKT VQGVQSSYL HSLLEMGELL
KKRLETTKKL KI

Characteristics: Human C12orf30 full-length ORF (NP_079229.2, 1 a.a. - 972 a.a.) recombinant protein with GST-tag at N-terminal.

Purification: in vitro wheat germ expression system

Target Details

Target: NAA25

Alternative Name: C12orf30 ([NAA25 Products](#))

Background: Full Gene Name: chromosome 12 open reading frame 30
Synonyms: DKFZp667K2112,FLJ13089,MDM20

Gene ID: 80018

NCBI Accession: [NM_024953](#)

Application Details

Application Notes: Optimal working dilution should be determined by the investigator.

Comment: Preparation method: in vitro, wheat germ expression system
Product Quality tested by: 12.5% SDS-PAGE Stained with Coomassie Blue.

Restrictions: For Research Use only

Handling

Buffer: 50 mM Tris-HCl, 10 mM reduced Glutathione, pH =8.0 in the elution buffer.

Handling Advice: Aliquot to avoid repeated freezing and thawing.

Storage: -80 °C

Storage Comment: Best use within three months from the date of receipt of this protein.

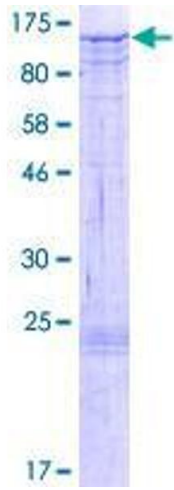


Image 1.