



[Go to Product page](#)

Datasheet for ABIN1347094

C12orf40 Protein (AA 1-422) (GST tag)

1 Image

Overview

Quantity:	10 µg
Target:	C12orf40
Protein Characteristics:	AA 1-422
Origin:	Human
Source:	Wheat germ
Protein Type:	Recombinant
Purification tag / Conjugate:	This C12orf40 protein is labelled with GST tag.
Application:	ELISA, Western Blotting (WB), Antibody Array (AA), Affinity Purification (AP)

Product Details

Purpose:	C12orf40 (Human) Recombinant Protein (P01)
Sequence:	MVNQISCKKK IPETVRKPTH VNMNRDIKMP LRKHNLLELTM SPHCVPSKLC LDDTETNVNC QRLSSKEDLG PVQSQGMSY SMLHPQFSKI ENCSFTPSSF SVELPSNRHI SKLNFTSGIA PTPQKLAYEK KQNDQRSTVN CSDSLLSKLN KSQDVFSPSH KTTRFGTLFE RLNSLGNRNL LTKSPAVIMD EDCRSTDEIR QSDYITEKHS IQHIWGKNGK EVSNFLEDVN QSTPNLLSEN CDSFVSQNM NVLNIDEQRI KKTFFNKCDYD SMGDFCVVTS SDKNHVTDRC IRNIFTVPEL TFSNSTLNKT SYPEKCQPNK KYQREYNKNE RNDLSTSFEN DYPPSSSERK EKFENDYQEK TPQKSIQKYP ANSMGNIPSE ELHSKQSWDF GLDEILMEEG GIYSLKSKRI STKKICQYNC IS
Characteristics:	Human C12orf40 full-length ORF (AAH38754.2, 1 a.a. - 422 a.a.) recombinant protein with GST-tag at N-terminal.
Purification:	in vitro wheat germ expression system

Target Details

Target:	C12orf40
Alternative Name:	C12orf40 (C12orf40 Products)
Background:	Full Gene Name: chromosome 12 open reading frame 40 Synonyms: FLJ40126
Gene ID:	283461

Application Details

Application Notes:	Optimal working dilution should be determined by the investigator.
Comment:	Preparation method: in vitro, wheat germ expression system Product Quality tested by: 12.5% SDS-PAGE Stained with Coomassie Blue.
Restrictions:	For Research Use only

Handling

Buffer:	50 mM Tris-HCl, 10 mM reduced Glutathione, pH =8.0 in the elution buffer.
Handling Advice:	Aliquot to avoid repeated freezing and thawing.
Storage:	-80 °C
Storage Comment:	Best use within three months from the date of receipt of this protein.

Images

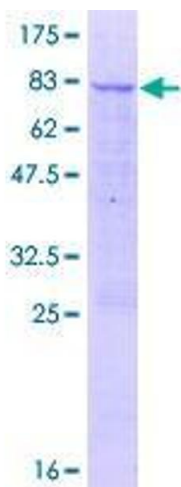


Image 1.