



[Go to Product page](#)

Datasheet for ABIN1347133

BORA Protein (AA 1-551) (GST tag)

1 Image

Overview

Quantity:	10 µg
Target:	BORA
Protein Characteristics:	AA 1-551
Origin:	Human
Source:	Wheat germ
Protein Type:	Recombinant
Purification tag / Conjugate:	This BORA protein is labelled with GST tag.
Application:	ELISA, Western Blotting (WB), Antibody Array (AA), Affinity Purification (AP)

Product Details

Purpose:	FLJ22624 (Human) Recombinant Protein (P01)
Sequence:	<p>MQITPETPGR IPVLNPFESP SDYSNLHEQT LASPSVFKST KLPTPGKFRW SIDQLAVINP VEIDPEDIHR QALYLSHSRI DKDVEDKRQK AIEEFFTKDV IVPSPWTDHE GKQLSQCHSS KCTNINSDSP VGKKLTIHSE KSDAACQTL SLPVDFNLEN ILGDYFRADE FADQSPGNLS SSSLRRKFLF DGNGSISDSL PSASPGSPHS GVQTSLEMFY SIDLSPVKCR SPLQTPSSGQ FSSSPIQASA KKYSLSGITS PSPISSPTFS PIEFQIGETP LSEQRKFTVH SPDASSGTNS NGITNPCIRS PYIDGCSPK NWSMRLQMY SGGTQYRTSV IQIPFTLETQ GEDEEDKENI PSTDVSSPAM DAAGIHLRQF SNEASTHGTH LVVTAMSVTQ NQSSASEKEL ALLQDVEREK DNNTVDMVDP IEIADETTWI KEPVDNGSLP MTDVSGIAF SIENSHMCMS PLAESSVIPC ESSNIQMDSG YNTQNCGSNI MDTVGAESYC KESDAQTCEV ESKSQAFNMK QDHTTQRCWM KTASPFQCSS P</p>
Characteristics:	Human FLJ22624 full-length ORF (AAH56876, 1 a.a. - 551 a.a.) recombinant protein with GST-

Product Details

tag at N-terminal.

Purification: in vitro wheat germ expression system

Target Details

Target: BORA

Alternative Name: C13orf34 ([BORA Products](#))

Background: Full Gene Name: chromosome 13 open reading frame 34
Synonyms: BORA,FLJ22624

Gene ID: 79866

Application Details

Application Notes: Optimal working dilution should be determined by the investigator.

Comment: Preparation method: in vitro, wheat germ expression system
Product Quality tested by: 12.5% SDS-PAGE Stained with Coomassie Blue.

Restrictions: For Research Use only

Handling

Buffer: 50 mM Tris-HCl, 10 mM reduced Glutathione, pH =8.0 in the elution buffer.

Handling Advice: Aliquot to avoid repeated freezing and thawing.

Storage: -80 °C

Storage Comment: Best use within three months from the date of receipt of this protein.

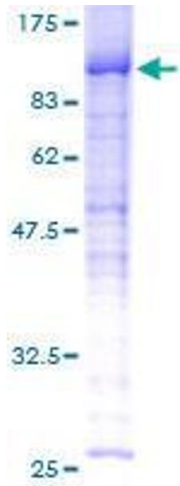


Image 1.