

Datasheet for ABIN1347135  
**METTL21C Protein (AA 1-264) (GST tag)**



[Go to Product page](#)

1 Image

## Overview

Quantity:	10 µg
Target:	METTL21C
Protein Characteristics:	AA 1-264
Origin:	Human
Source:	Wheat germ
Protein Type:	Recombinant
Purification tag / Conjugate:	This METTL21C protein is labelled with GST tag.
Application:	Western Blotting (WB), ELISA, Antibody Array (AA), Affinity Purification (AP)

## Product Details

Purpose:	C13orf39 (Human) Recombinant Protein (P01)
Sequence:	MDVCLSSAQQ PRRRGEGLSS PGGWLEAEKK GAPQKDSTGG VLEESNKIEP SLHSLQKFVP TDYASYTQEH YRFAGKEIVI QESIESYGAV VWPGAMALCQ YLEEHAEELN FQDAKILEIG AGPGLVSIVA SILGAQVTAT DLPDVLGNLQ YNLLKNTLQC TAHLPEVKEL VWGEDLDKNF PKSAFYDYDV LASDVVYHHY FLDKLLTTMV YLSQPGTVLL WANKFRFSTD YEFLDKFKQV FDTLLAEYP ESSVKLFKGI LKWD
Characteristics:	Human C13orf39 full-length ORF ( NP_001010977.1, 1 a.a. - 264 a.a.) recombinant protein with GST-tag at N-terminal.
Purification:	in vitro wheat germ expression system

## Target Details

Target:	METTL21C
Alternative Name:	C13orf39 ( <a href="#">METTL21C Products</a> )
Background:	Full Gene Name: chromosome 13 open reading frame 39 Synonyms:
Gene ID:	196541
NCBI Accession:	<a href="#">NM_001010977</a>

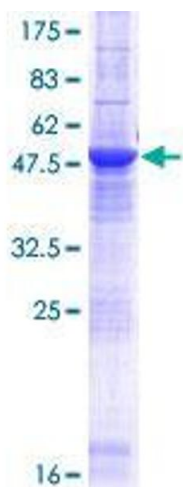
## Application Details

Application Notes:	Optimal working dilution should be determined by the investigator.
Comment:	Preparation method: in vitro, wheat germ expression system Product Quality tested by: 12.5% SDS-PAGE Stained with Coomassie Blue.
Restrictions:	For Research Use only

## Handling

Buffer:	50 mM Tris-HCl, 10 mM reduced Glutathione, pH =8.0 in the elution buffer.
Handling Advice:	Aliquot to avoid repeated freezing and thawing.
Storage:	-80 °C
Storage Comment:	Best use within three months from the date of receipt of this protein.

## Images



**Image 1.**