



Datasheet for ABIN1347146

## C14orf126 Protein (AA 1-168) (GST tag)



[Go to Product page](#)

### 1 Image

#### Overview

Quantity:	10 µg
Target:	C14orf126
Protein Characteristics:	AA 1-168
Origin:	Human
Source:	Wheat germ
Protein Type:	Recombinant
Purification tag / Conjugate:	This C14orf126 protein is labelled with GST tag.
Application:	ELISA, Western Blotting (WB), Antibody Array (AA), Affinity Purification (AP)

#### Product Details

Purpose:	C14orf126 (Human) Recombinant Protein (P01)
Sequence:	MAEGSRIPQA RALLQQLHA RLQIRPADGD VAAQWVEVQR GLVIYVCFFK GADKELLPKM VNTLLNVKLS ETENGKHVSI LDLPGNILII PQATLGGRLK GRNMQYHSNS GKEEGFELYS QFVTLCEKEV AANSKCAEAR VVVEHGTYGN RQVLKLDTNG PFTHLIEF
Characteristics:	Human C14orf126 full-length ORF ( NP_542395.1, 1 a.a. - 168 a.a.) recombinant protein with GST-tag at N-terminal.
Purification:	in vitro wheat germ expression system

#### Target Details

Target:	C14orf126
Alternative Name:	C14orf126 ( <a href="#">C14orf126 Products</a> )

## Target Details

Background:	Full Gene Name: chromosome 14 open reading frame 126 Synonyms: MGC9912
Gene ID:	112487
NCBI Accession:	<a href="#">NM_080664</a>

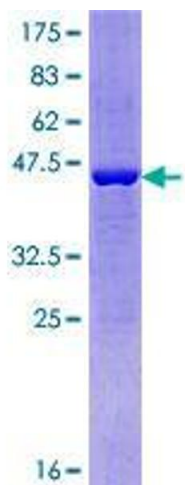
## Application Details

Application Notes:	Optimal working dilution should be determined by the investigator.
Comment:	Preparation method: in vitro, wheat germ expression system Product Quality tested by: 12.5% SDS-PAGE Stained with Coomassie Blue.
Restrictions:	For Research Use only

## Handling

Buffer:	50 mM Tris-HCl, 10 mM reduced Glutathione, pH =8.0 in the elution buffer.
Handling Advice:	Aliquot to avoid repeated freezing and thawing.
Storage:	-80 °C
Storage Comment:	Best use within three months from the date of receipt of this protein.

## Images



**Image 1.**