

Datasheet for ABIN1347191  
**CDIP1 Protein (AA 1-208) (GST tag)**



[Go to Product page](#)

1 Image

## Overview

Quantity:	10 µg
Target:	CDIP1
Protein Characteristics:	AA 1-208
Origin:	Human
Source:	Wheat germ
Protein Type:	Recombinant
Purification tag / Conjugate:	This CDIP1 protein is labelled with GST tag.
Application:	ELISA, Western Blotting (WB), Antibody Array (AA), Affinity Purification (AP)

## Product Details

Purpose:	C16orf5 (Human) Recombinant Protein (P01)
Sequence:	MSSEPPPPYP GGPTAPLLEE KSGAPPTPGR SSPAVMQPPP GMPLPPADIG PPPYEPPGHP MPQPGFIPPH MSADGTYMPP GFYPPPGPHP PMGYPPGPY TPGYPGPGG HTATVLVPSG AATTVTVLQG EIFEGAPVQT VCPHCQQAIT TKISYEIGLM NFVLGFFCCF MGCDLGCCLI PCLINDFKDV THTCPSCKAY IYTYKRLC
Characteristics:	Human C16orf5 full-length ORF ( AAH02882.1, 1 a.a. - 208 a.a.) recombinant protein with GST-tag at N-terminal.
Purification:	in vitro wheat germ expression system

## Target Details

Target:	CDIP1
---------	-------

## Target Details

Alternative Name:	C16orf5 (CDIP1 Products)
Background:	Full Gene Name: chromosome 16 open reading frame 5 Synonyms: CDIP,11
Gene ID:	29965

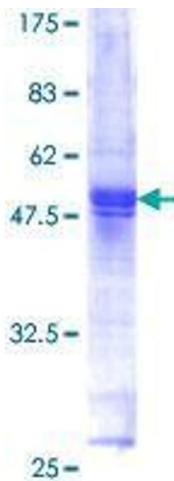
## Application Details

Application Notes:	Optimal working dilution should be determined by the investigator.
Comment:	Preparation method: in vitro, wheat germ expression system Product Quality tested by: 12.5% SDS-PAGE Stained with Coomassie Blue.
Restrictions:	For Research Use only

## Handling

Buffer:	50 mM Tris-HCl, 10 mM reduced Glutathione, pH =8.0 in the elution buffer.
Handling Advice:	Aliquot to avoid repeated freezing and thawing.
Storage:	-80 °C
Storage Comment:	Best use within three months from the date of receipt of this protein.

## Images



**Image 1.**