



[Go to Product page](#)

Datasheet for ABIN1347197

## C16orf62 Protein (AA 1-963) (GST tag)

### 1 Image

#### Overview

Quantity:	25 µg
Target:	C16orf62
Protein Characteristics:	AA 1-963
Origin:	Human
Source:	Wheat germ
Protein Type:	Recombinant
Purification tag / Conjugate:	This C16orf62 protein is labelled with GST tag.
Application:	ELISA, Western Blotting (WB), Antibody Array (AA), Affinity Purification (AP)

#### Product Details

Purpose:	C16orf62 (Human) Recombinant Protein (P01)
Sequence:	<p>MAVFPWHSRN RNYKAEFASC RLEAVPLEFG DYHPLKPITV TESKTKKVNR KGSTSSTSSS</p> <p>SSSSVVDPLS SVLDGTDPLS MFAATADPAA LAAAMDSSRR KRDRDDNSV V GSDFEPWTK</p> <p>RGEILARYTT TEKLSINLFM GSEKKGAGTA TLAMSEKVRT RLEELDDFEE GSQKELLNLT</p> <p>QQDYVNRIEE LNQSLKDAWA SDQKVKALKI VIQCSKLLSD TSVIQFYPSK FVLITDILDT</p> <p>FGKLVYERIF SMCVDSRSVL PDHFSPENAN DTAKETCLNW FFKIASIREL IPRFYVEASI</p> <p>LKCNKFLSKT GISECLPRLT CMIRGIGDPL VSVYARAYLC RVGMEVAPHL KETLNKNFFD</p> <p>FLLTFKQIHG DTVQNQLVVQ GVELPSYLPL YPPAMDWIFQ CISYHAPEAL LTEMMERCKK</p> <p>LGNNALLLNS VMSAFRAEFI ATRSMDFIGM IKECDESGFP KHLLFRSLGL NLALADPPES</p> <p>DRLQILNEAW KVITKLNKPNQ DYINCAEVWV EYTCKHFTKR EVNTVLADVI KHMTDPDRAFE</p> <p>DSYPQLQLII KKVIAHFHDF SVLFSVEKFL PFLDMFQKES VRVEVCKCIM DAFIKHQQEP</p> <p>TKDPVILNAL LHVCKTMHDS VNALTLEDEK RMLSYLINGF IKMVSFGRDF EQQLSFYVES</p>

## Product Details

---

RSMFCNLEPV LVQLIHSVNR LAMETRKVMK GNHSRKTA AF VRACVAYCFI TIPSLAGIFT  
RLNLYLHSGQ VALANQCLSQ ADAFFKAAIS LVPEVPKMIN IDGKMRPSES FLLEFLCNFF  
STLLIVPDHP EHGVLFLVRE LLNVIQDYTW EDNSDEKIRI YTCVLHLLSA MSQETYLYHI  
DKVDSNDSLY GGDSKFLAEN NKL CETVMAQ ILEHLKTLAK DEALKRQSSL GLSFFNSILA  
HGDLRNNKLN QLSVNLWHLA QRHG CADTRT MVKTLEYIKK QSKQPDMTHL TELALRLPLQ TRT

Characteristics: Human C16orf62 full-length ORF ( NP\_064710.3, 1 a.a. - 963 a.a.) recombinant protein with GST-tag at N-terminal.

Purification: in vitro wheat germ expression system

## Target Details

---

Target: C16orf62

Alternative Name: C16orf62 ([C16orf62 Products](#))

Background: Full Gene Name: chromosome 16 open reading frame 62  
Synonyms: DKFZp313M0539,DKFZp434B0212,FLJ21040,MGC16824

Gene ID: 57020

NCBI Accession: [NM\\_020314](#)

## Application Details

---

Application Notes: Optimal working dilution should be determined by the investigator.

Comment: Preparation method: in vitro, wheat germ expression system  
Product Quality tested by: 12.5% SDS-PAGE Stained with Coomassie Blue.

Restrictions: For Research Use only

## Handling

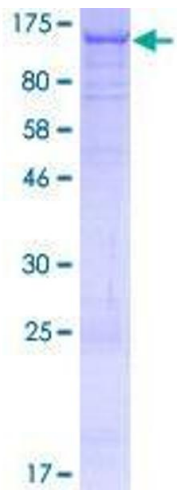
---

Buffer: 50 mM Tris-HCl, 10 mM reduced Glutathione, pH =8.0 in the elution buffer.

Handling Advice: Aliquot to avoid repeated freezing and thawing.

Storage: -80 °C

Storage Comment: Best use within three months from the date of receipt of this protein.



**Image 1.**