



[Go to Product page](#)

Datasheet for ABIN1347198

PDZD9 Protein (AA 1-202) (GST tag)

1 Image

Overview

Quantity:	10 µg
Target:	PDZD9
Protein Characteristics:	AA 1-202
Origin:	Human
Source:	Wheat germ
Protein Type:	Recombinant
Purification tag / Conjugate:	This PDZD9 protein is labelled with GST tag.
Application:	ELISA, Western Blotting (WB), Antibody Array (AA), Affinity Purification (AP)

Product Details

Purpose:	C16orf65 (Human) Recombinant Protein (P01)
Sequence:	MAEGEEEGGD VLISVGHANV LGYTLREFLQ LLQHITIGTV LQIKVYRDFI NIPEEWQEIY DLIPEAKFPV TSTPKKIELA KDESFTSSDD NENVLDKRL QYYRYPWSTV HHPARRPISI SRDWHGYK KKK NHTISVGKDI NCDVMIHRDD KKEVRAPSPY WIMVKQDNES SSSSTSSTSD AFWLEDCAQV EEGKAQLVSK VG
Characteristics:	Human C16orf65 full-length ORF (NP_776167.1, 1 a.a. - 202 a.a.) recombinant protein with GST-tag at N-terminal.
Purification:	in vitro wheat germ expression system

Target Details

Target:	PDZD9
---------	-------

Target Details

Alternative Name:	C16orf65 (PDZD9 Products)
Background:	Full Gene Name: chromosome 16 open reading frame 65 Synonyms: MGC50721
Gene ID:	255762
NCBI Accession:	NM_173806

Application Details

Application Notes:	Optimal working dilution should be determined by the investigator.
Comment:	Preparation method: in vitro, wheat germ expression system Product Quality tested by: 12.5% SDS-PAGE Stained with Coomassie Blue.
Restrictions:	For Research Use only

Handling

Buffer:	50 mM Tris-HCl, 10 mM reduced Glutathione, pH =8.0 in the elution buffer.
Handling Advice:	Aliquot to avoid repeated freezing and thawing.
Storage:	-80 °C
Storage Comment:	Best use within three months from the date of receipt of this protein.

Images

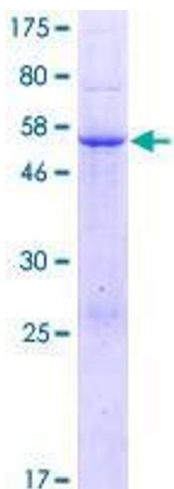


Image 1.