



[Go to Product page](#)

Datasheet for ABIN1347203  
**C16orf70 Protein (AA 1-422) (GST tag)**

1 Image

Overview

|                               |   |
|-------------------------------|---|
| Quantity:                     | 10 µg   |
| Target:                       | C16orf70  |
| Protein Characteristics:      | AA 1-422  |
| Origin:                       | Human   |
| Source:                       | Wheat germ  |
| Protein Type:                 | Recombinant   |
| Purification tag / Conjugate: | This C16orf70 protein is labelled with GST tag.                               |
| Application:                  | ELISA, Western Blotting (WB), Antibody Array (AA), Affinity Purification (AP) |

Product Details

|                  |  |
|------------------|--|
| Purpose:         | C16orf70 (Human) Recombinant Protein (P01)   |
| Sequence:        | MLDLEVVPER SLGNEQWEFT LGMPLAQAVA ILQKHCRILK NVQVLYSEQS PLSHDLILNL<br>TQDGIKLMFD AFNQLKLVIE VCDLTKVKLK YCGVHFNSQA IAPTIEIDQ SFGATHPGVY<br>NSAEQLFHLN FRGLSFSFQL DSWTEAPKYE PNFAHGLASL QIPHGATVKR MYIYSGNSLQ<br>DTKAPMMPLS CFLGNVYAES VDVLRDGTGP AGLRLRLAA GCGPGLLADA KMRVFERSVY<br>FGDSCQDVLS MLGSPHKVfy KSEDKMKIHS PSPHKQVPSK CNDYFFNYFT LGVDILFDAN<br>THKVKKfVLH TNYPGHYNFN IYHRCEFKIP LAIKKENADG QTETCTTYSK WDNIQELLGH<br>PVEKPVVLHR SSSPNNTNPF GSTFCFGLQR MIFEVMQNNH IASVTLYGPP RPGSHLRTAE LP |
| Characteristics: | Human C16orf70 full-length ORF ( NP_079463.2, 1 a.a. - 422 a.a.) recombinant protein with GST-tag at N-terminal.   |
| Purification:    | in vitro wheat germ expression system  |

## Target Details

|                   |  |
|-------------------|--|
| Target:           | C16orf70   |
| Alternative Name: | C16orf70 ( <a href="#">C16orf70 Products</a> )   |
| Background:       | Full Gene Name: chromosome 16 open reading frame 70<br>Synonyms: C16orf6,FLJ12076,LIN10,lin-10 |
| Gene ID:          | 80262  |
| NCBI Accession:   | <a href="#">NM_025187</a>  |

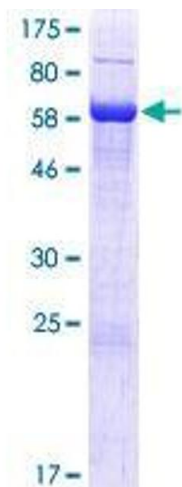
## Application Details

|                    |  |
|--------------------|--|
| Application Notes: | Optimal working dilution should be determined by the investigator.   |
| Comment:           | Preparation method: in vitro, wheat germ expression system<br>Product Quality tested by: 12.5% SDS-PAGE Stained with Coomassie Blue. |
| Restrictions:      | For Research Use only  |

## Handling

|                  |   |
|------------------|---|
| Buffer:          | 50 mM Tris-HCl, 10 mM reduced Glutathione, pH =8.0 in the elution buffer. |
| Handling Advice: | Aliquot to avoid repeated freezing and thawing.                           |
| Storage:         | -80 °C  |
| Storage Comment: | Best use within three months from the date of receipt of this protein.    |

## Images



**Image 1.**