

Datasheet for ABIN1347211
C16ORF87 Protein (AA 1-154) (GST tag)



[Go to Product page](#)

1 Image

Overview

Quantity:	10 µg
Target:	C16ORF87
Protein Characteristics:	AA 1-154
Origin:	Human
Source:	Wheat germ
Protein Type:	Recombinant
Purification tag / Conjugate:	This C16ORF87 protein is labelled with GST tag.
Application:	ELISA, Western Blotting (WB), Antibody Array (AA), Affinity Purification (AP)

Product Details

Purpose:	LOC388272 (Human) Recombinant Protein (P01)
Sequence:	MSATRAKKVK MATKSCPECD QQVPVACKSC PCGYIFISRK LLNAKHSEKS PPSTENKHEA KRRRTERVRR EKINSTVNKD LENRKRSRSN SHSDHIRRGR GRPKSASAKK HEEEREKQEK EIDIYANLSD EKAFVFSVAL AEINRKIINQ RLIL
Characteristics:	Human LOC388272 full-length ORF (NP_001001436.1, 1 a.a. - 154 a.a.) recombinant protein with GST-tag at N-terminal.
Purification:	in vitro wheat germ expression system

Target Details

Target:	C16ORF87
Alternative Name:	C16orf87 (C16ORF87 Products)

Target Details

Background:	Full Gene Name: chromosome 16 open reading frame 87 Synonyms: MGC62018
Gene ID:	388272
NCBI Accession:	NM_001001436

Application Details

Application Notes:	Optimal working dilution should be determined by the investigator.
Comment:	Preparation method: in vitro, wheat germ expression system Product Quality tested by: 12.5% SDS-PAGE Stained with Coomassie Blue.
Restrictions:	For Research Use only

Handling

Buffer:	50 mM Tris-HCl, 10 mM reduced Glutathione, pH =8.0 in the elution buffer.
Handling Advice:	Aliquot to avoid repeated freezing and thawing.
Storage:	-80 °C
Storage Comment:	Best use within three months from the date of receipt of this protein.

Images

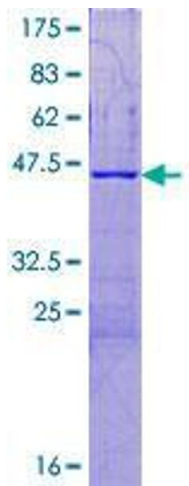


Image 1.