



[Go to Product page](#)

Datasheet for ABIN1347213

## OGFOD3 Protein (AA 1-331) (GST tag)

### 1 Image

#### Overview

Quantity:	10 µg
Target:	OGFOD3
Protein Characteristics:	AA 1-331
Origin:	Human
Source:	Wheat germ
Protein Type:	Recombinant
Purification tag / Conjugate:	This OGFOD3 protein is labelled with GST tag.
Application:	ELISA, Western Blotting (WB), Antibody Array (AA), Affinity Purification (AP)

#### Product Details

Purpose:	FLJ22222 (Human) Recombinant Protein (P01)
Sequence:	MAPQRRRAATK APEGNGAAER RNRSSTKKDR APREVQRLWQ RPWLRTAGLG AGFVLTALLL WSSLGADDGV AEVLARRGEV VAGRFIEVPC SEDYDSHRRF EGCTPRKCGR GVTDDVVITRE EAERIRVAE KGLSLGGSDG GASILDLHSG ALSVGKHFVN LYRYFGDKIQ NIFSEEDFRL YREVRQKVQL TIAEAFGISA SSLHLTKPTF FSRINSTEAR TAHDEYWHAH VDKVITYGSFD YTSLLYLSNY LEDFGGGRFM FMEEGANKTV ERRAGCFCFR MMSCGFQEVN GPRASEAAGA KAGVRCPPGT HHPPERGETH AILEAESIAY C
Characteristics:	Human FLJ22222 full-length ORF ( NP_787098.2, 1 a.a. - 331 a.a.) recombinant protein with GST-tag at N-terminal.
Purification:	in vitro wheat germ expression system

## Target Details

Target:	OGFOD3
Alternative Name:	C17orf101 ( <a href="#">OGFOD3 Products</a> )
Background:	Full Gene Name: chromosome 17 open reading frame 101 Synonyms: FLJ22222
Gene ID:	79701
NCBI Accession:	<a href="#">NM_175902</a>

## Application Details

Application Notes:	Optimal working dilution should be determined by the investigator.
Comment:	Preparation method: in vitro, wheat germ expression system Product Quality tested by: 12.5% SDS-PAGE Stained with Coomassie Blue.
Restrictions:	For Research Use only

## Handling

Buffer:	50 mM Tris-HCl, 10 mM reduced Glutathione, pH =8.0 in the elution buffer.
Handling Advice:	Aliquot to avoid repeated freezing and thawing.
Storage:	-80 °C
Storage Comment:	Best use within three months from the date of receipt of this protein.

## Images

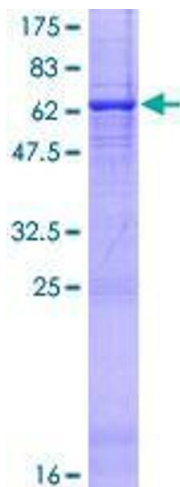


Image 1.