

Datasheet for ABIN1347245  
**FAM210A Protein (AA 1-272) (GST tag)**



[Go to Product page](#)

1 Image

Overview

Quantity:	10 µg
Target:	FAM210A
Protein Characteristics:	AA 1-272
Origin:	Human
Source:	Wheat germ
Protein Type:	Recombinant
Purification tag / Conjugate:	This FAM210A protein is labelled with GST tag.
Application:	ELISA, Western Blotting (WB), Antibody Array (AA), Affinity Purification (AP)

Product Details

Purpose:	C18orf19 (Human) Recombinant Protein (P01)
Sequence:	<p>MQWNVPRTVS RLARRTCLEP HNAGLFGHCQ NVKGPLLLYN AESKVVLVQG PQQQWLHLSA AQCVAKERRP LDAHPPQPGV LRHKQGKQHV SFRRVFSSSA TAQGTPEKKE EPDPLQDKSI SLYQRFKKTFF RQYGKVLIPV HLITSGVWFG TFYYAALKGV NVVPFLELIG LPDSVVSILK NSQSGNALTA YALFKIATPA RYTVTLGGTS VTVKYLRSHG YMSTPPPVKE CLQDRMEETK ELITEKMEET KDRLTEKLQE TKEKVSFKKK VE</p>
Characteristics:	Human C18orf19 full-length ORF ( AAH22410, 1 a.a. - 272 a.a.) recombinant protein with GST-tag at N-terminal.
Purification:	in vitro wheat germ expression system

## Target Details

Target:	FAM210A
Alternative Name:	C18orf19 ( <a href="#">FAM210A Products</a> )
Background:	Full Gene Name: chromosome 18 open reading frame 19 Synonyms: HsT2329,MGC24180
Gene ID:	125228

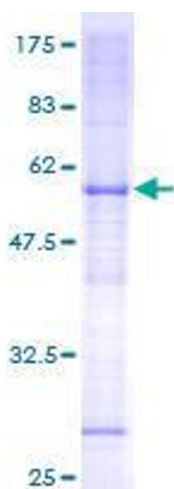
## Application Details

Application Notes:	Optimal working dilution should be determined by the investigator.
Comment:	Preparation method: in vitro, wheat germ expression system Product Quality tested by: 12.5% SDS-PAGE Stained with Coomassie Blue.
Restrictions:	For Research Use only

## Handling

Buffer:	50 mM Tris-HCl, 10 mM reduced Glutathione, pH =8.0 in the elution buffer.
Handling Advice:	Aliquot to avoid repeated freezing and thawing.
Storage:	-80 °C
Storage Comment:	Best use within three months from the date of receipt of this protein.

## Images



**Image 1.**