



[Go to Product page](#)

Datasheet for ABIN1347260
URI1 Protein (AA 1-495) (GST tag)

1 Image

Overview

Quantity:	10 µg
Target:	URI1
Protein Characteristics:	AA 1-495
Origin:	Human
Source:	Wheat germ
Protein Type:	Recombinant
Purification tag / Conjugate:	This URI1 protein is labelled with GST tag.
Application:	ELISA, Western Blotting (WB), Antibody Array (AA), Affinity Purification (AP)

Product Details

Purpose:	C19orf2 (Human) Recombinant Protein (P01)
Sequence:	MWRGCARSRK RKKVDNDYNA LRERLSTLPD KLSYNIMVPF GPFAFMPGKL VHTNEVTVLL GDNWFAKCSA KQAVGLVEHR KEHVRKTIDD LKKVMKNFES RVEFTEDLQK MSDAAGDIVD IREEIKCDFE FKAKHRIAHK PHSKPKTSDI FEADIANDVK SKDLLADKEL WARLEELERQ EELLGELDSK PDTVIANGED TTSSEEEKED RNTNVNAMHQ VTDSHTPCHK DVASSEPFSG QVNSQLNCSV NGSSSYHSDD DDDDDDDDDD DNIDDDGDN DHEALGVGDN SIPTIYFSHT VEPKRVRINT GKNTTLKFSE KKEEAKRKRK NSTGSGHSAQ ELPTIRTPAD IYRAFVDVWN GEYVPRKSIL KRSRENSVC SDTSESSAAE FDDRRGVLRS ISCEEATCSD TSESILEEEP QENQKLLPL SVTPEAFSGT VIEKEFVSPS LTPPPAIAHP ALPTIPERKE VLLEASEETG KRVSFKAAAR LQQKD
Characteristics:	Human C19orf2 full-length ORF (NP_604431.1, 1 a.a. - 495 a.a.) recombinant protein with GST-tag at N-terminal.

Product Details

Purification: in vitro wheat germ expression system

Target Details

Target: URI1

Alternative Name: C19orf2 ([URI1 Products](#))

Background: Full Gene Name: chromosome 19 open reading frame 2
Synonyms: FLJ10575,NNX3,RMP,URI

Gene ID: 8725

NCBI Accession: [NM_134447](#)

Application Details

Application Notes: Optimal working dilution should be determined by the investigator.

Comment: Preparation method: in vitro, wheat germ expression system
Product Quality tested by: 12.5% SDS-PAGE Stained with Coomassie Blue.

Restrictions: For Research Use only

Handling

Buffer: 50 mM Tris-HCl, 10 mM reduced Glutathione, pH =8.0 in the elution buffer.

Handling Advice: Aliquot to avoid repeated freezing and thawing.

Storage: -80 °C

Storage Comment: Best use within three months from the date of receipt of this protein.

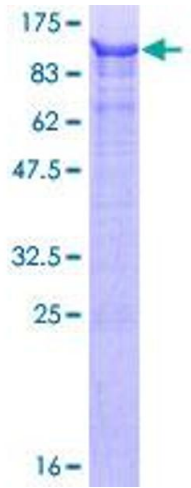


Image 1.