



[Go to Product page](#)

Datasheet for ABIN1347262

URI1 Protein (AA 371-475) (GST tag)

1 Image

Overview

Quantity:	10 µg
Target:	URI1
Protein Characteristics:	AA 371-475
Origin:	Human
Source:	Wheat germ
Protein Type:	Recombinant
Purification tag / Conjugate:	This URI1 protein is labelled with GST tag.
Application:	ELISA, Western Blotting (WB), Antibody Array (AA), Affinity Purification (AP)

Product Details

Purpose:	C19orf2 (Human) Recombinant Protein (Q01)
Sequence:	NSTGSGHSAQ ELPTIRTPAD IYRAFVDVFN GEYVPRKSIL KSRSPRENSVC SDTSESSAAE FDDRRGVLRS ISCEEATCSD TSESILEEEP QENQKLLPL SVTPE
Characteristics:	Human C19orf2 partial ORF (NP_003787, 371 a.a. - 475 a.a.) recombinant protein with GST-tag at N-terminal.
Purification:	in vitro wheat germ expression system

Target Details

Target:	URI1
Alternative Name:	C19orf2 (URI1 Products)

Target Details

Background:	Full Gene Name: chromosome 19 open reading frame 2 Synonyms: FLJ10575, NNX3, RMP, URI
Gene ID:	8725
NCBI Accession:	NM_003796

Application Details

Application Notes:	Optimal working dilution should be determined by the investigator.
Comment:	Preparation method: in vitro, wheat germ expression system Product Quality tested by: 12.5% SDS-PAGE Stained with Coomassie Blue.
Restrictions:	For Research Use only

Handling

Buffer:	50 mM Tris-HCl, 10 mM reduced Glutathione, pH =8.0 in the elution buffer.
Handling Advice:	Aliquot to avoid repeated freezing and thawing.
Storage:	-80 °C
Storage Comment:	Best use within three months from the date of receipt of this protein.

Images

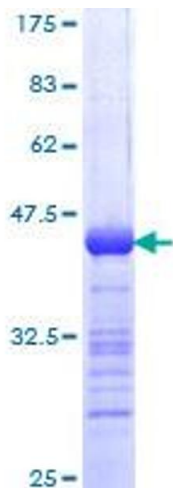


Image 1.