

Datasheet for ABIN1347293

C1orf103 Protein (AA 1-436) (GST tag)



[Go to Product page](#)

1 Image

Overview

Quantity:	10 µg
Target:	C1orf103
Protein Characteristics:	AA 1-436
Origin:	Human
Source:	Wheat germ
Protein Type:	Recombinant
Purification tag / Conjugate:	This C1orf103 protein is labelled with GST tag.
Application:	ELISA, Western Blotting (WB), Antibody Array (AA), Affinity Purification (AP)

Product Details

Purpose:	C1orf103 (Human) Recombinant Protein (P01)
Sequence:	MPPLSTIDPS GTRSKNMPIK DNALVMFNGK VYLLAKKGTD VLPSQIDQQN SVSPDTPVRK DTLQTVSSSP VTEISREVVN IVLAKSKSSQ METKSLSNTQ LASMANLRAE KNKVEKPSPS TTNPHMNQSS NYLKQSKTLF TNPIFPVGFS TGHNAPRKVT AVIYARKGSV LQSIEKISSS VDATTVTSQQ CVFRDQEPKI HNEMASTSDK GAQGRNDKKD SQGRSNKALH LKSDAEFKKI FGLTKDLRVC LTRIPDHLTS GEGFDSFSSL VKSGTYKETE FMVKEGERKQ QNFDKKRKAK TNKKMDHIKK RKTENAYNAI INGEANVTGS QLLSSILPTS DVSQHNILTS HSKTRQEKRT EMEYYTHEKQ EKGTLNSNAA YEQSHFFNKN YTEDIFPVTP PELEETIRDE KIRRLKQVLR EKEAALEEMR KKM HQK
Characteristics:	Human C1orf103 full-length ORF (AAH08115, 1 a.a. - 436 a.a.) recombinant protein with GST-tag at N-terminal.

Product Details

Purification: in vitro wheat germ expression system

Target Details

Target: C1orf103

Alternative Name: C1orf103 ([C1orf103 Products](#))

Background: Full Gene Name: chromosome 1 open reading frame 103
Synonyms: FLJ11269,RIF1,RP11-96K19.1

Gene ID: 55791

Pathways: [Nuclear Hormone Receptor Binding](#)

Application Details

Application Notes: Optimal working dilution should be determined by the investigator.

Comment: Preparation method: in vitro, wheat germ expression system
Product Quality tested by: 12.5% SDS-PAGE Stained with Coomassie Blue.

Restrictions: For Research Use only

Handling

Buffer: 50 mM Tris-HCl, 10 mM reduced Glutathione, pH =8.0 in the elution buffer.

Handling Advice: Aliquot to avoid repeated freezing and thawing.

Storage: -80 °C

Storage Comment: Best use within three months from the date of receipt of this protein.

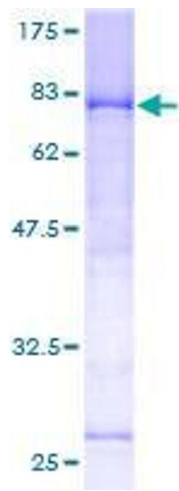


Image 1.