



Datasheet for ABIN1347301

## C1orf112 Protein (AA 1-853) (GST tag)



[Go to Product page](#)

### 1 Image

#### Overview

Quantity:	25 µg
Target:	C1orf112 (C10RF112)
Protein Characteristics:	AA 1-853
Origin:	Human
Source:	Wheat germ
Protein Type:	Recombinant
Purification tag / Conjugate:	This C1orf112 protein is labelled with GST tag.
Application:	ELISA, Western Blotting (WB), Antibody Array (AA), Affinity Purification (AP)

#### Product Details

Purpose:	C1orf112 (Human) Recombinant Protein (P01)
Sequence:	MFLPHMNHLT LEQFFSQVL PKTVKLFDDM MYELTSQARG LSSQNLEIQT TLRNILQTMV QLLGALTGCV QHICATQESI ILENIQSLPS SVLHIIKSTF VHCKNSESVY SGCLHLVSDL LQALFKEAYS LQKQLMELLD MVCMDPLVDD NDDILNMVIV IHSLLDICSV ISSMDHAFHA NTWKFIKQS LKHQSIKSQ LKHKDIITSL CEDILFSFHS CLQLAEQMTQ SDAQDNADYR LFQKTLKLCR FFANSLHYA KEFLPFLSDS CCTLHQLYLQ IHSKFPPSLY ATRISKAHQE EIAGAFVLTL DPLISQLLTF QPFMQVVLDS KLDLPCELQF PQCLLLVVVM DKLPSQPKEV QTLWCTDSQV SETTTRISLL KAVFYSEFQC SGELSLPVHL QGLKSKGKAE VAVTLYQHVC VHLCTFITSF HPSLFAELDA ALLNAVLSAN MITSLLAMDA WCFLARYGTA ELCAHHVTIV AHLIKSCPGE CYQLINLSIL LKRLFFMAP PHQLEFIQKF SPKEAENLPL WQHISFQALP PELREQTVHE VTTVGTAECR KWLSRSRTLK ELESNTVLS ALLAVCNSAG EALDTGKQTA IIEVSQLWA FLNIKQVADQ PYVQQTFSLL LPLLGFFIQT LDPKILQAV TLQTSLLKLE

## Product Details

---

LPDYVRLAML DfvSSLGKLF IPEAIQDRIL PNLSCMFALL LADRSWLLEQ HTLEAFTQFA  
EGTNHEEIVP QCLSSEETKN KVVSFLEKTG FVDETEAAKV ERVKQKEGIF WEPFANVTVE  
EAKRSSLQPY AKRARQEFPW EEEYRSALHT IAGALEATES LLQKGPAPAW LSMEMEALQE  
RMDKCLKRYIH TLG

Characteristics: Human C1orf112 full-length ORF ( NP\_060656.2, 1 a.a. - 853 a.a.) recombinant protein with GST-tag at N-terminal.

Purification: in vitro wheat germ expression system

## Target Details

---

Target: C1orf112 (C1ORF112)

Alternative Name: C1orf112 ([C1ORF112 Products](#))

Background: Full Gene Name: chromosome 1 open reading frame 112  
Synonyms: FLJ10706,FLJ13470,MGC130018,MGC130019,RP1-97P20.1

Gene ID: 55732

NCBI Accession: [NM\\_018186](#)

## Application Details

---

Application Notes: Optimal working dilution should be determined by the investigator.

Comment: Preparation method: in vitro, wheat germ expression system  
Product Quality tested by: 12.5% SDS-PAGE Stained with Coomassie Blue.

Restrictions: For Research Use only

## Handling

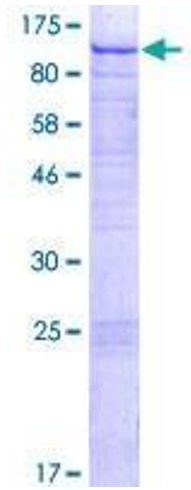
---

Buffer: 50 mM Tris-HCl, 10 mM reduced Glutathione, pH =8.0 in the elution buffer.

Handling Advice: Aliquot to avoid repeated freezing and thawing.

Storage: -80 °C

Storage Comment: Best use within three months from the date of receipt of this protein.



**Image 1.**