



[Go to Product page](#)

Datasheet for ABIN1347410

## ABHD16B Protein (AA 1-392) (GST tag)

### 1 Image

#### Overview

Quantity:	10 µg
Target:	ABHD16B
Protein Characteristics:	AA 1-392
Origin:	Human
Source:	Wheat germ
Protein Type:	Recombinant
Purification tag / Conjugate:	This ABHD16B protein is labelled with GST tag.
Application:	ELISA, Western Blotting (WB), Antibody Array (AA), Affinity Purification (AP)

#### Product Details

Purpose:	C20orf135 (Human) Recombinant Protein (P01)
Sequence:	MCVICFKAL VRFKIYLTA SYTYPFRGWP VAFRWDDVRA VGRSSSHRAL TCAAAAAGVW LLRDETLGGD ALGRPPRGAR SQAQCLLQQL RELPGQLASY ALAHSLSGRWL VYPGSVSLMT RALLPLLQQG QERLVERYHG RRAKLVACDG NEIDTMFMDR RQHPGSHVHG PRLVICCEGN AGFYEMGCLS APLEAGYSVL GWNHPGFGSS TGVPFPQHDA NAMDVVEYA LHRLHFPPAH LVVYGWSVGG FTATWATMTY PELGALVLDA TFDDLVLPLAL KVMPHSWKGL VVRTVREHFN LNVAEQLCCY PGPVLLLRRT QDDVSTSGR LRPLSPGDVE GNRGNELLRL LLEHRYPVVM AREGRAVVTR WLRAGSLAQE AAFYARYRVD ED
Characteristics:	Human C20orf135 full-length ORF ( AAH31949.1, 1 a.a. - 392 a.a.) recombinant protein with GST-tag at N-terminal.
Purification:	in vitro wheat germ expression system

## Target Details

Target:	ABHD16B
Alternative Name:	C20orf135
Background:	Full Gene Name: chromosome 20 open reading frame 135 Synonyms: MGC42974,dJ591C20.1
Gene ID:	140701

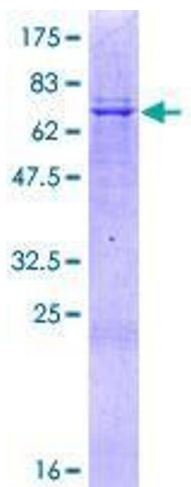
## Application Details

Application Notes:	Optimal working dilution should be determined by the investigator.
Comment:	Preparation method: in vitro, wheat germ expression system Product Quality tested by: 12.5% SDS-PAGE Stained with Coomassie Blue.
Restrictions:	For Research Use only

## Handling

Buffer:	50 mM Tris-HCl, 10 mM reduced Glutathione, pH =8.0 in the elution buffer.
Handling Advice:	Aliquot to avoid repeated freezing and thawing.
Storage:	-80 °C
Storage Comment:	Best use within three months from the date of receipt of this protein.

## Images



**Image 1.**