

Datasheet for ABIN1347412

**C20orf141 Protein (AA 1-165) (GST tag)**[Go to Product page](#)

## 1 Image

## Overview

Quantity:	10 µg
Target:	C20orf141
Protein Characteristics:	AA 1-165
Origin:	Human
Source:	Wheat germ
Protein Type:	Recombinant
Purification tag / Conjugate:	This C20orf141 protein is labelled with GST tag.
Application:	ELISA, Western Blotting (WB), Antibody Array (AA), Affinity Purification (AP)

## Product Details

Purpose:	C20orf141 (Human) Recombinant Protein (P01)
Sequence:	MTRLCLPRPE AREDPIVPPP RGLGAGEGSG SPVRPPVSTW GPSWAQLLDS VLWLGALGLT IQAVFSTTGP ALLLLLVSFL TFDLLHRPAG HTLPQRKLLT RGQSQGAGEG PGQQEALLQ MGTVSGQLSL QDALLLLLMG LGPLL RACGM PLTLLGLAFC LHPWA
Characteristics:	Human C20orf141 full-length ORF ( NP_542777.1, 1 a.a. - 165 a.a.) recombinant protein with GST-tag at N-terminal.
Purification:	in vitro wheat germ expression system

## Target Details

Target:	C20orf141
Alternative Name:	C20orf141 ( <a href="#">C20orf141 Products</a> )

## Target Details

Background:	Full Gene Name: chromosome 20 open reading frame 141 Synonyms: MGC26144,dJ860F19.4
Gene ID:	128653
NCBI Accession:	<a href="#">NM_080739</a>

## Application Details

Application Notes:	Optimal working dilution should be determined by the investigator.
Comment:	Preparation method: in vitro, wheat germ expression system Product Quality tested by: 12.5% SDS-PAGE Stained with Coomassie Blue.
Restrictions:	For Research Use only

## Handling

Buffer:	50 mM Tris-HCl, 10 mM reduced Glutathione, pH =8.0 in the elution buffer.
Handling Advice:	Aliquot to avoid repeated freezing and thawing.
Storage:	-80 °C
Storage Comment:	Best use within three months from the date of receipt of this protein.

## Images

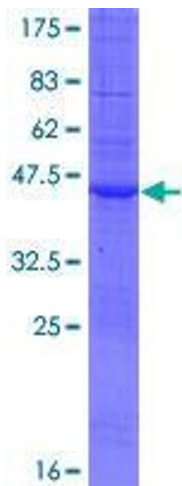


Image 1.