

Datasheet for ABIN1347418
BPIFB4 Protein (AA 1-575) (GST tag)



[Go to Product page](#)

1 Image

Overview

Quantity:	10 µg
Target:	BPIFB4
Protein Characteristics:	AA 1-575
Origin:	Human
Source:	Wheat germ
Protein Type:	Recombinant
Purification tag / Conjugate:	This BPIFB4 protein is labelled with GST tag.
Application:	ELISA, Western Blotting (WB), Antibody Array (AA), Affinity Purification (AP)

Product Details

Purpose:	C20orf186 (Human) Recombinant Protein (P01)
Sequence:	<p>MLQQSDALHS ALREVPLGVG DIPYNDHFVR GPPPVYTNGK KLDGIYQYGH IETNDNTAQL GGKYRYGEIL ESEGSIRDLR NSGYRSAENA YGGHRGLGRY RAAPVGR LHR RELQPGEIPP GVATGAVGPG GLLGTGGMLA ADGILAGQGG LLGGGGLLGD GLLGGGGVL GVLGEGGILS TVQGITGLRI VELTLPRVSV RLLPGVGVYL SLYTRVAING KSLIGFLDIA VEVNITAKVR LTMDRTGYPR LVIERCDTLL GGIKVKLLRG LLPNLVDNLV NRVLADVLPD LLCPIVDVVL GLVNDQLGLV DSLIPLGILG SVQYTFSSLP LVTGEFLELD LNTLVGEAGG GLIDYPLGWP AVSPKPMPEL PPMGDNTKSQ LAMSANFLGS VLTLQKQHA LDLDITNGMF EELPPLTTAT LGALIPKVFQ QYPESCPLII RIQVLNPPSV MLQKDKALVK VLATAEVMVS QPKDLETTIC LIDVDTEFLA SFSTEGDKLM IDAKLEKTSL NLRTSNVGNF DIGLMEVLVE KIFDLAFMPA MNAVLGSGVP LPKILNIDFS NADIDVLEDL LVLSA</p>
Characteristics:	Human C20orf186 full-length ORF (AAI46506.1, 1 a.a. - 575 a.a.) recombinant protein with GST-

Product Details

tag at N-terminal.

Purification: in vitro wheat germ expression system

Target Details

Target: BPIFB4

Alternative Name: C20orf186 ([BPIFB4 Products](#))

Background: Full Gene Name: chromosome 20 open reading frame 186
Synonyms: LPLUNC4,RY2G5,dJ726C3.5

Gene ID: 149954

Application Details

Application Notes: Optimal working dilution should be determined by the investigator.

Comment: Preparation method: in vitro, wheat germ expression system
Product Quality tested by: 12.5% SDS-PAGE Stained with Coomassie Blue.

Restrictions: For Research Use only

Handling

Buffer: 50 mM Tris-HCl, 10 mM reduced Glutathione, pH =8.0 in the elution buffer.

Handling Advice: Aliquot to avoid repeated freezing and thawing.

Storage: -80 °C

Storage Comment: Best use within three months from the date of receipt of this protein.

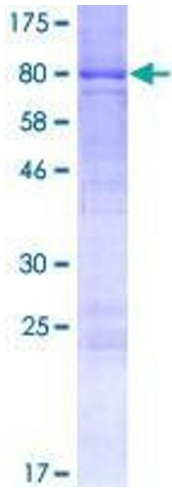


Image 1.