

Datasheet for ABIN1347455

**PAX3 and PAX7 Binding Protein 1 (PAXBP1) (AA 1-398)  
protein (GST tag)**[Go to Product page](#)**1** Image

## Overview

Quantity:	10 µg
Target:	PAX3 and PAX7 Binding Protein 1 (PAXBP1)
Protein Characteristics:	AA 1-398
Origin:	Human
Source:	Wheat germ
Protein Type:	Recombinant
Purification tag / Conjugate:	GST tag
Application:	ELISA, Western Blotting (WB), Antibody Array (AA), Affinity Purification (AP)

## Product Details

Purpose:	C21orf66 (Human) Recombinant Protein (P01)
Sequence:	MFRKARRVNV RKRNDSEEEE RERDEEQEPP PLLPPPGTGE EAGPGGGDRA PGGESLLGPG PSPPSALTPG LGAEAGGGFP GGAEPGNGLK PRKRPRENKE VPRASLLSFQ DEEEENEVVF KVKKSSYSKK IVKLLKKEYK EDLEKSIKKT ELNSSAESEQ PLDKTGHVKD TNQEDGVIIS EHGEDEMME SEKEEEKPKT GGAFSNALSS LNVLRPGEIP DAAFIHAARK KRQMARELGD FTPHDNEPGK GRLVREDEND ASDDEDDDEK RRIVFSVKEK SQRQKIAEEI GIEGSDDDAL VTGEQDEELS RWEQEQIRKG INIPVQASQ PAEVNMYQYQY TYQTMPYGSS YGIPYSYTAY GSSDAKSQKT DNTVPFKTPS NEMTPVTIDL VKKQLKDR
Characteristics:	Human C21orf66 full-length ORF ( AAH30539.1, 1 a.a. - 398 a.a.) recombinant protein with GST-tag at N-terminal.
Purification:	in vitro wheat germ expression system

## Target Details

Target:	PAX3 and PAX7 Binding Protein 1 (PAXBP1)
Alternative Name:	C21orf66 ( <a href="#">PAXBP1 Products</a> )
Background:	Full Gene Name: chromosome 21 open reading frame 66 Synonyms: BM-020,FLJ90561,GCFC,fSAP105
Gene ID:	94104

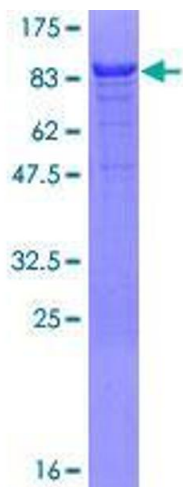
## Application Details

Application Notes:	Optimal working dilution should be determined by the investigator.
Comment:	Preparation method: in vitro, wheat germ expression system Product Quality tested by: 12.5% SDS-PAGE Stained with Coomassie Blue.
Restrictions:	For Research Use only

## Handling

Buffer:	50 mM Tris-HCl, 10 mM reduced Glutathione, pH =8.0 in the elution buffer.
Handling Advice:	Aliquot to avoid repeated freezing and thawing.
Storage:	-80 °C
Storage Comment:	Best use within three months from the date of receipt of this protein.

## Images



**Image 1.**