



[Go to Product page](#)

Datasheet for ABIN1347470

C2CD2 Protein (AA 1-388) (GST tag)

1 Image

Overview

Quantity:	10 µg
Target:	C2CD2
Protein Characteristics:	AA 1-388
Origin:	Human
Source:	Wheat germ
Protein Type:	Recombinant
Purification tag / Conjugate:	This C2CD2 protein is labelled with GST tag.
Application:	ELISA, Western Blotting (WB), Antibody Array (AA), Affinity Purification (AP)

Product Details

Purpose:	C21orf25 (Human) Recombinant Protein (P01)
Sequence:	MRLSPFHLQL EFHMKEKRED LQISWSFISV PEMA VNIQPK ALGEDQVAET SAMSDVLKDI LKHLGASASP SVVLITKPTT VKEAQLQCA ASTAQESCPP KPPRAHELKL LVRNIHVLLL SEPGASGHIN AVCVVQLNDP VQRFSSSTLTK NTPDLMWEEE FTFELNAKSK ELHLQISEAG RSSEGLLATA TVPLDLFKKQ PSGPQSFTLT SGSACGSSVL GSVTAEFSYM EPGELKSWPI PPPVPAKIE KDRTVMPCGT VTTVTAVKT KPRVDVGRAS PLSSDSPVKT PIKVKVIEKD ISVQAIACRS APVSKTLSS DTELLVLNGS DPVAEVAIRQ LSESSKLLK SPRKKSTIII SGISKVPSWW LGRCSSGHLS VTCCSSAL
Characteristics:	Human C21orf25 full-length ORF (AAH62323, 1 a.a. - 388 a.a.) recombinant protein with GST-tag at N-terminal.
Purification:	in vitro wheat germ expression system

Target Details

Target:	C2CD2
Alternative Name:	C2CD2 (C2CD2 Products)
Background:	Full Gene Name: C2 calcium-dependent domain containing 2 Synonyms: C21orf25,C21orf258,DKFZp586F0422,DKFZp686O198,MGC71445,TMEM24L
Gene ID:	25966

Application Details

Application Notes:	Optimal working dilution should be determined by the investigator.
Comment:	Preparation method: in vitro, wheat germ expression system Product Quality tested by: 12.5% SDS-PAGE Stained with Coomassie Blue.
Restrictions:	For Research Use only

Handling

Buffer:	50 mM Tris-HCl, 10 mM reduced Glutathione, pH =8.0 in the elution buffer.
Handling Advice:	Aliquot to avoid repeated freezing and thawing.
Storage:	-80 °C
Storage Comment:	Best use within three months from the date of receipt of this protein.

Images

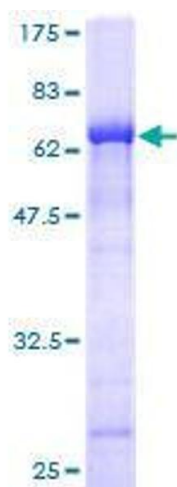


Image 1.