

Datasheet for ABIN1347472
C2CD2L Protein (AA 1-706) (GST tag)



[Go to Product page](#)

1 Image

Overview

Quantity:	25 µg
Target:	C2CD2L
Protein Characteristics:	AA 1-706
Origin:	Human
Source:	Wheat germ
Protein Type:	Recombinant
Purification tag / Conjugate:	This C2CD2L protein is labelled with GST tag.
Application:	ELISA, Western Blotting (WB), Antibody Array (AA), Affinity Purification (AP)

Product Details

Purpose:	TMEM24 (Human) Recombinant Protein (P01)
Sequence:	MDPGWGQRDV GWAALLILFA ASLLTVFAWL LQYARGLWLA RARGDRGPGP ALAGEPAGSL RELGVWRSLL RLRATRAGAA EEPGVRGLLA SLFAFKSFRE NWQRAWVRAL NEQACRNGSS IQIAFEEVPQ LPPRASISHV TCVDQSEHTM VLRCQLSAEE VRFVSVTQQ SPAAVSMETY HVTLTLPPTQ LEVNLEEIPG EGLLISWAFT DRPDLSLTVL PKLQARERGE EQVELSTIEE LIKDAIVSTQ PAMMVNLRAC SAPGGLVPSE KPPMMPQAQP AIPRPNRFL RQLRASHLGN ELEGTEELCC VAELDNPMQQ KWTKPARAGS EVEWTEDLAL DLGPQSRELT LKVLRSSSCG DTELLGQATL PVGSPSRPLS RRQLCPLTPG PGKALGPAAT MAVELHYEEG SPRNLGTPTS STPRPSITPT KKIELDRTIM PDGTIVTTVT TVQSRPRIDG KLDSPSRSPS KVEVTEKTTT VLSSESGPSN TSHSSSRDSH LSNGLDPVAE TAIRQLTEPS GRVAKKTPTK RSTLIISGVS KVPIAQDELA LSLGYAASLE ASVQDDAGTS GGPSSPPSDP PAMSPGPLDA LSSPTSQVEA DETRSDISE RPSVDDIESE TGSTGALETR SLKDHKVSFL RSGTKLIFRR RPRQKEAGLS

Product Details

QSHDDLSNAT ATPSVRKKAG SFSRRLIKRF SFKSKPKANG NPSPQL

Characteristics: Human TMEM24 full-length ORF (AAH22219.1, 1 a.a. - 706 a.a.) recombinant protein with GST-tag at N-terminal.

Purification: in vitro wheat germ expression system

Target Details

Target: C2CD2L

Alternative Name: C2CD2L ([C2CD2L Products](#))

Background: Full Gene Name: C2CD2-like
Synonyms: DLNB23,KIAA0285,TMEM24

Gene ID: 9854

Application Details

Application Notes: Optimal working dilution should be determined by the investigator.

Comment: Preparation method: in vitro, wheat germ expression system
Product Quality tested by: 12.5% SDS-PAGE Stained with Coomassie Blue.

Restrictions: For Research Use only

Handling

Buffer: 50 mM Tris-HCl, 10 mM reduced Glutathione, pH =8.0 in the elution buffer.

Handling Advice: Aliquot to avoid repeated freezing and thawing.

Storage: -80 °C

Storage Comment: Best use within three months from the date of receipt of this protein.

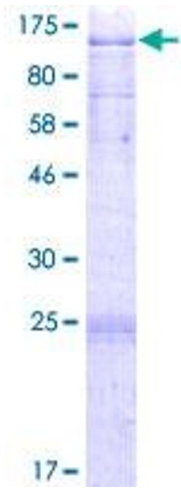


Image 1.