

Datasheet for ABIN1347491

C2orf63 Protein (AA 1-586) (GST tag)



[Go to Product page](#)

1 Image

Overview

Quantity:	10 µg
Target:	C2orf63
Protein Characteristics:	AA 1-586
Origin:	Human
Source:	Wheat germ
Protein Type:	Recombinant
Purification tag / Conjugate:	This C2orf63 protein is labelled with GST tag.
Application:	ELISA, Western Blotting (WB), Antibody Array (AA), Affinity Purification (AP)

Product Details

Purpose:	C2orf63 (Human) Recombinant Protein (P01)
Sequence:	MSVHQIRKHA VLPPIICRS D KEFLESVQRY IITETERLGC SEEGPADEYY IYRNVFDKV IEHITAYKSI LTSIKKEYDA FIETIKKDRR TTFCLHGK LK GLAAEPTALV YYRKR TIQLE AKMRIIESNS SKIQSQIDHI KQCRAEYDTK EVKYCTFSKD PSKPIPGMTL QESMNLDALT KYMKHLEDKY AEIKQAMLIK YVPAQRKADL DEEMIVLLKR RDVAENLNKK LQFCHQRLQI ISQALSSWVK SDMSPPFQDF VEIQKTKYL QGDQGIVEEL MEDDPRRAKE AEIMLHYIER FNELISLGEY EKAACYAANS PRRILRNIGT MNTFKAVGKI RGKPLPLLLF FEALFITSHA FPCPVDAALT LEGIKCGLSE KRLDLVTNWV TQERLTFSEE AGDVICDYGE QDTYNKAKCL ALAQIYSEC GLHKKAILCL CKQGQTHRVM EYIQQLKDFT TDDLQLLMS CPQVELIQCL TKELNEKQPS LSFGLAILHL FSVDMKKVGI KLLQEINKGG IDAVESLMIN DSFCSIEKWQ EVANICSQNG FDKLSNDITS ILRSQAAVTE ISEEDDAVNL MEHVFW
Characteristics:	Human C2orf63 full-length ORF (NP_689598.1, 1 a.a. - 586 a.a.) recombinant protein with GST-

Product Details

tag at N-terminal.

Purification: in vitro wheat germ expression system

Target Details

Target: C2orf63

Alternative Name: C2orf63 ([C2orf63 Products](#))

Background: Full Gene Name: chromosome 2 open reading frame 63
Synonyms: FLJ31438

Gene ID: 130162

NCBI Accession: [NM_152385](#)

Application Details

Application Notes: Optimal working dilution should be determined by the investigator.

Comment: Preparation method: in vitro, wheat germ expression system
Product Quality tested by: 12.5% SDS-PAGE Stained with Coomassie Blue.

Restrictions: For Research Use only

Handling

Buffer: 50 mM Tris-HCl, 10 mM reduced Glutathione, pH =8.0 in the elution buffer.

Handling Advice: Aliquot to avoid repeated freezing and thawing.

Storage: -80 °C

Storage Comment: Best use within three months from the date of receipt of this protein.

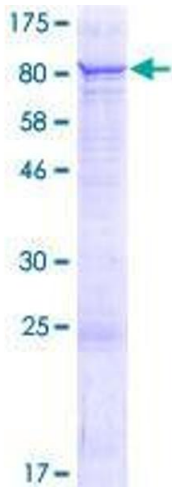


Image 1.