

Datasheet for ABIN1347495  
**PRADC1 Protein (AA 1-188) (GST tag)**



[Go to Product page](#)

1 Image

Overview

Quantity:	10 µg
Target:	PRADC1
Protein Characteristics:	AA 1-188
Origin:	Human
Source:	Wheat germ
Protein Type:	Recombinant
Purification tag / Conjugate:	This PRADC1 protein is labelled with GST tag.
Application:	ELISA, Western Blotting (WB), Antibody Array (AA), Affinity Purification (AP)

Product Details

Purpose:	C2orf7 (Human) Recombinant Protein (P01)
Sequence:	MVPGAAGWCC LVLWLPACVA AHGFRIHDYL YFQVLSPGDI RYIFTATPAK DFGGIFHTRY EQIHLVPAEP PEACGELSNG FFIQDQIALV ERGGCSFLSK TRVVQEHGGR AVIISDNAV NDSFYVEMIQ DSTQRTADIP ALFLLGRDGY MIRRSLEQHG LPWAIISIPV NVTSIPTFEL LQPPWTFW
Characteristics:	Human C2orf7 full-length ORF ( NP_115695.1, 1 a.a. - 188 a.a.) recombinant protein with GST-tag at N-terminal.
Purification:	in vitro wheat germ expression system

Target Details

Target:	PRADC1
---------	--------

## Target Details

Alternative Name:	C2orf7 ( <a href="#">PRADC1 Products</a> )
Background:	Full Gene Name: chromosome 2 open reading frame 7 Synonyms: MGC13004,PAP21
Gene ID:	84279
NCBI Accession:	<a href="#">NM_032319</a>

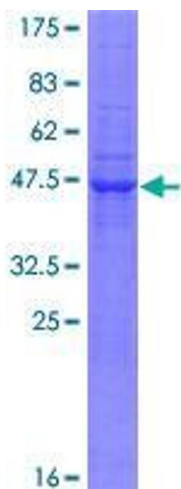
## Application Details

Application Notes:	Optimal working dilution should be determined by the investigator.
Comment:	Preparation method: in vitro, wheat germ expression system Product Quality tested by: 12.5% SDS-PAGE Stained with Coomassie Blue.
Restrictions:	For Research Use only

## Handling

Buffer:	50 mM Tris-HCl, 10 mM reduced Glutathione, pH =8.0 in the elution buffer.
Handling Advice:	Aliquot to avoid repeated freezing and thawing.
Storage:	-80 °C
Storage Comment:	Best use within three months from the date of receipt of this protein.

## Images



**Image 1.**