



[Go to Product page](#)

Datasheet for ABIN1347533

C3ORF70 Protein (AA 1-250) (GST tag)

1 Image

Overview

Quantity:	10 µg
Target:	C3ORF70
Protein Characteristics:	AA 1-250
Origin:	Human
Source:	Wheat germ
Protein Type:	Recombinant
Purification tag / Conjugate:	This C3ORF70 protein is labelled with GST tag.
Application:	ELISA, Western Blotting (WB), Antibody Array (AA), Affinity Purification (AP)

Product Details

Purpose:	LOC285382 (Human) Recombinant Protein (P01)
Sequence:	MSAAASPASE RGWKSEKLDE AQALARSCAA RRPDFQPCDG LSICATHSHG KCFKLHWCCCH LGWCHCKYMY QPMTPEQLP STEIPARPRE PTNTIQISVS LTEHFLKFAS VFQPPLPPDS PRYCMISDLF IDNYQVKCIN GKMCYVQKQP APHSHRMSPE EVSAHDALIS KESNTPKIDH CSSPSSSEDS GINAIGAHYV ESCDEDETEEG AELSSEEDYS PESSWEPDEC TLLSPSQSDL EVIETIETTV
Characteristics:	Human LOC285382 full-length ORF (NP_001020437.1, 1 a.a. - 250 a.a.) recombinant protein with GST-tag at N-terminal.
Purification:	in vitro wheat germ expression system

Target Details

Target:	C3ORF70
Alternative Name:	C3orf70 (C3ORF70 Products)
Background:	Full Gene Name: chromosome 3 open reading frame 70 Synonyms:
Gene ID:	285382
NCBI Accession:	NM_001025266

Application Details

Application Notes:	Optimal working dilution should be determined by the investigator.
Comment:	Preparation method: in vitro, wheat germ expression system Product Quality tested by: 12.5% SDS-PAGE Stained with Coomassie Blue.
Restrictions:	For Research Use only

Handling

Buffer:	50 mM Tris-HCl, 10 mM reduced Glutathione, pH =8.0 in the elution buffer.
Handling Advice:	Aliquot to avoid repeated freezing and thawing.
Storage:	-80 °C
Storage Comment:	Best use within three months from the date of receipt of this protein.

Images

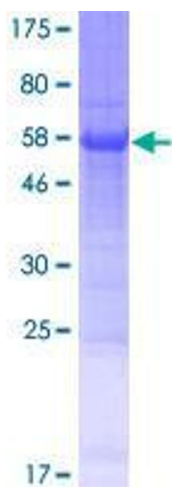


Image 1.