



[Go to Product page](#)

Datasheet for ABIN1347540

## C4B Protein (AA 774-873) (GST tag)

### 1 Image

#### Overview

Quantity:	10 µg
Target:	C4B (C4b)
Protein Characteristics:	AA 774-873
Origin:	Human
Source:	Wheat germ
Protein Type:	Recombinant
Purification tag / Conjugate:	This C4B protein is labelled with GST tag.
Application:	Western Blotting (WB), ELISA, Antibody Array (AA), Affinity Purification (AP)

#### Product Details

Purpose:	C4B (Human) Recombinant Protein (Q02)
Sequence:	VRSFFPENWL WRVETVDRFQ ILTLWLPSL TTWEIHGLSL SKTKGLCVAT PVQLRVFREF HLHLRLPMSV RRFEQLELRP VLYNYLTKNL TVSVHVSPVE
Characteristics:	Human C4B partial ORF ( NP_000343, 774 a.a. - 873 a.a.) recombinant protein with GST-tag at N-terminal.
Purification:	in vitro wheat germ expression system

#### Target Details

Target:	C4B (C4b)
Alternative Name:	C4B ( <a href="#">C4b Products</a> )

## Target Details

Background:	Full Gene Name: complement component 4B (Chido blood group) Synonyms: C4A,C4A13,C4A91,C4B1,C4B12,C4B2,C4B3,C4B5,C4F,CH,CO4,CPAMD3,FLJ60561,MGC164979
Gene ID:	721
NCBI Accession:	<a href="#">NG_004658</a>
Pathways:	<a href="#">Complement System</a>

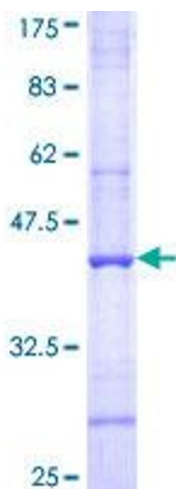
## Application Details

Application Notes:	Optimal working dilution should be determined by the investigator.
Comment:	Preparation method: in vitro, wheat germ expression system Product Quality tested by: 12.5% SDS-PAGE Stained with Coomassie Blue.
Restrictions:	For Research Use only

## Handling

Buffer:	50 mM Tris-HCl, 10 mM reduced Glutathione, pH =8.0 in the elution buffer.
Handling Advice:	Aliquot to avoid repeated freezing and thawing.
Storage:	-80 °C
Storage Comment:	Best use within three months from the date of receipt of this protein.

## Images



**Image 1.**