



[Go to Product page](#)

Datasheet for ABIN1347553

## CABS1 Protein (AA 1-395) (GST tag)

### 1 Image

#### Overview

Quantity:	10 µg
Target:	CABS1
Protein Characteristics:	AA 1-395
Origin:	Human
Source:	Wheat germ
Protein Type:	Recombinant
Purification tag / Conjugate:	This CABS1 protein is labelled with GST tag.
Application:	ELISA, Western Blotting (WB), Antibody Array (AA), Affinity Purification (AP)

#### Product Details

Purpose:	C4orf35 (Human) Recombinant Protein (P01)
Sequence:	MAEDGLPKIY SHPPTSSKT PTAATIFFGA DNAIPKSETT ITSEGDHVTS VNEYMLESDF STTTDNKLTA KKEKLKSEDD MGTDFIKSTT HLQKEITSLT GTTNSITRDS ITEHFMPVKI GNISSPVTTV SLIDFSTDIA KEDILLATID TGDAEISITS EVSGTLKDSS AGVADAPAFP RKKDEADMSN YNSSIKSNVP ADEAVQVTDS IPEAEIPPA PEESFTTIPD ITALEEEKIT EIDLSVLEDD TSAVATLTDS DEKFITVFEL TTSAEKDKDK REDTLLTDEE TTEGASIGME RDTANEAETH SVLLTAVESR YDFVVPASIA TNLVEESSTE EDLSETDNTE TVPKITEPFS GTTSVLDTDPD YKEDTSTTET DIFELLKEEP DEFMI
Characteristics:	Human C4orf35 full-length ORF ( AAH46111.1, 1 a.a. - 395 a.a.) recombinant protein with GST-tag at N-terminal.
Purification:	in vitro wheat germ expression system

## Target Details

Target:	CABS1
Alternative Name:	C4orf35 ( <a href="#">CABS1 Products</a> )
Background:	Full Gene Name: chromosome 4 open reading frame 35 Synonyms: FLJ32897,NYD-SP26
Gene ID:	85438

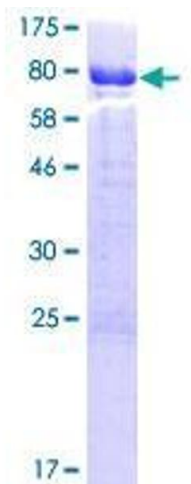
## Application Details

Application Notes:	Optimal working dilution should be determined by the investigator.
Comment:	Preparation method: in vitro, wheat germ expression system Product Quality tested by: 12.5% SDS-PAGE Stained with Coomassie Blue.
Restrictions:	For Research Use only

## Handling

Buffer:	50 mM Tris-HCl, 10 mM reduced Glutathione, pH =8.0 in the elution buffer.
Handling Advice:	Aliquot to avoid repeated freezing and thawing.
Storage:	-80 °C
Storage Comment:	Best use within three months from the date of receipt of this protein.

## Images



**Image 1.**