

Datasheet for ABIN1347565
C5 Protein (AA 1550-1661) (GST tag)



[Go to Product page](#)

1 Image

Overview

Quantity:	10 µg
Target:	C5
Protein Characteristics:	AA 1550-1661
Origin:	Human
Source:	Wheat germ
Protein Type:	Recombinant
Purification tag / Conjugate:	This C5 protein is labelled with GST tag.
Application:	Western Blotting (WB), ELISA, Antibody Array (AA), Affinity Purification (AP)

Product Details

Sequence:	QTACKPEIAY AYKVSITSIT VENVFVKYKA TLLDIYKTGE AVAEKDSEIT FIKKVTCTNA ELVKGRQYLI MGKEALQIKY NFSFRYIYPL DSLTWIEYWP RDTTCSSCQA FL
-----------	--

Target Details

Target:	C5
Alternative Name:	C5 (C5 Products)
Background:	Full Gene Name: complement component 5 Synonyms: CPAMD4,FLJ17816,FLJ17822,MGC142298
Gene ID:	727
NCBI Accession:	NP_001726 , NM_001735

Target Details

Pathways: [Complement System](#), [Carbohydrate Homeostasis](#)

Application Details

Application Notes: Optimal working dilution should be determined by the investigator.

Comment: Preparation method: in vitro, wheat germ expression system
Product Quality tested by: 12.5% SDS-PAGE Stained with Coomassie Blue.

Restrictions: For Research Use only

Handling

Buffer: 50 mM Tris-HCl, 10 mM reduced Glutathione, pH =8.0 in the elution buffer.

Handling Advice: Aliquot to avoid repeated freezing and thawing.

Storage: -80 °C

Storage Comment: Store at -80 °C. Aliquot to avoid repeated freezing and thawing.

Expiry Date: 3 months

Images

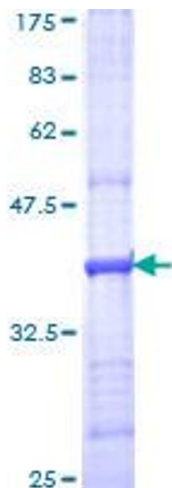


Image 1.