

Datasheet for ABIN1347574

Chromosome 5 Open Reading Frame 20 (C5ORF20) (AA 1-244) protein (GST tag)



[Go to Product page](#)

1 Image

Overview

Quantity:	25 µg
Target:	Chromosome 5 Open Reading Frame 20 (C5ORF20)
Protein Characteristics:	AA 1-244
Origin:	Human
Source:	Wheat germ
Protein Type:	Recombinant
Purification tag / Conjugate:	GST tag
Application:	ELISA, Western Blotting (WB), Antibody Array (AA), Affinity Purification (AP)

Product Details

Purpose:	C5orf20 (Human) Recombinant Protein (P01)
Sequence:	MHYGAATHIQ NSRSHGLETV PGHQRLERGA GGETPEFPGC HSPAPPENFG NELLPLSAPL QGLSEGLYPP GRNKTLPAQV LREGAVQFLH RGLCNSNLSS EASARPSGTQ DELHSSRRKT GQTRREGARK HLVCSEFRLYP FTVHTVSPGN SHLALYQVFK AVKLCPSETS FFLSRKSLKS SDPWHPPSLS PNSWNRQAGF RAWSSHLISL SLTCSDSQSR RVSSSQPPL HSLSSHRRAA HVPE
Characteristics:	Human C5orf20 full-length ORF (NP_570900.1, 1 a.a. - 244 a.a.) recombinant protein with GST-tag at N-terminal.
Purification:	in vitro wheat germ expression system

Target Details

Target:	Chromosome 5 Open Reading Frame 20 (C5ORF20)
---------	--

Target Details

Alternative Name:	C5orf20 (C5ORF20 Products)
Background:	Full Gene Name: chromosome 5 open reading frame 20 Synonyms: DCNP1
Gene ID:	140947
NCBI Accession:	NM_130848

Application Details

Application Notes:	Optimal working dilution should be determined by the investigator.
Comment:	Preparation method: in vitro, wheat germ expression system Product Quality tested by: 12.5% SDS-PAGE Stained with Coomassie Blue.
Restrictions:	For Research Use only

Handling

Buffer:	50 mM Tris-HCl, 10 mM reduced Glutathione, pH =8.0 in the elution buffer.
Handling Advice:	Aliquot to avoid repeated freezing and thawing.
Storage:	-80 °C
Storage Comment:	Best use within three months from the date of receipt of this protein.

Images

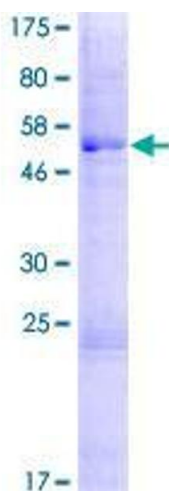


Image 1.