



[Go to Product page](#)

Datasheet for ABIN1347584

## C5orf36 Protein (AA 1-324) (GST tag)

### 1 Image

#### Overview

Quantity:	10 µg
Target:	C5orf36
Protein Characteristics:	AA 1-324
Origin:	Human
Source:	Wheat germ
Protein Type:	Recombinant
Purification tag / Conjugate:	This C5orf36 protein is labelled with GST tag.
Application:	ELISA, Western Blotting (WB), Antibody Array (AA), Affinity Purification (AP)

#### Product Details

Purpose:	C5orf36 (Human) Recombinant Protein (P01)
Sequence:	MDWDDEYSHN SFDLHCLLNS FPGDLEFEQI FSDIDEKIEQ NAASIKHCIK EIQSEINKQC PGVQLQTTTD CFEWLTNYNY STSESSFISH GDLIKFFKTL QDLLKNEQNQ EEMTLDLLWD LSCHSSVSFP STLSGTSFHF LSRTSLHSVE DNSSMDVKSM WDDIRLHLRR FLVSKLQSHN EINNSQQKIL LKKQCLQQLL FLYPESEVII KYQNIQNKLL ANLLWNCFPS YNRDSNLDVI AHGYQSTMLK LYSVIKEDFN TLCEILAPSS MVKFIKETYL DTVTEEMAKF LENFCELQFR ENAVRVVKTS KSSSKHRGAV HALG
Characteristics:	Human C5orf36 full-length ORF ( NP_775936.1, 1 a.a. - 324 a.a.) recombinant protein with GST-tag at N-terminal.
Purification:	in vitro wheat germ expression system

## Target Details

Target:	C5orf36
Alternative Name:	C5orf36 ( <a href="#">C5orf36 Products</a> )
Background:	Full Gene Name: chromosome 5 open reading frame 36 Synonyms: DKFZp686F0372,MGC34713
Gene ID:	285600
NCBI Accession:	<a href="#">NM_173665</a>

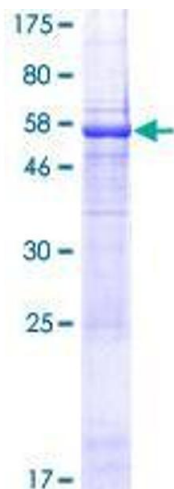
## Application Details

Application Notes:	Optimal working dilution should be determined by the investigator.
Comment:	Preparation method: in vitro, wheat germ expression system Product Quality tested by: 12.5% SDS-PAGE Stained with Coomassie Blue.
Restrictions:	For Research Use only

## Handling

Buffer:	50 mM Tris-HCl, 10 mM reduced Glutathione, pH =8.0 in the elution buffer.
Handling Advice:	Aliquot to avoid repeated freezing and thawing.
Storage:	-80 °C
Storage Comment:	Best use within three months from the date of receipt of this protein.

## Images



**Image 1.**