

Datasheet for ABIN1347590  
**CREBRF Protein (AA 1-639) (GST tag)**



[Go to Product page](#)

1 Image

Overview

Quantity:	10 µg
Target:	CREBRF
Protein Characteristics:	AA 1-639
Origin:	Human
Source:	Wheat germ
Protein Type:	Recombinant
Purification tag / Conjugate:	This CREBRF protein is labelled with GST tag.
Application:	ELISA, Western Blotting (WB), Antibody Array (AA), Affinity Purification (AP)

Product Details

Purpose:	C5orf41 (Human) Recombinant Protein (P01)
Sequence:	MPQPSVSGMD PPFGDAFRSH TFSEQTLMST DLLANSSDPD FMYELDREM N YQQNPRDNFL SLEDCKDIEN LESFTDVL DN EGALTSNWEQ WDTYCEDLTK YTKLTSCDIW GTKEVDYLGL DDFSSPYQDE EVISKPTLA QLNSSEDSQSV SDSLYY PDSL FSVKQNPLPS SFPGKKITSR AAPVCSSKT LQAEVPLSDC VQKASKPTSS TQIMVKTNMY HNEKVN FHVE CKDYVKKAKV KINPVQQSRP LLSQIHTDAA KENTCYCGAV AKRQEKKGME PLQGHATPAL PFKETQELL SPLPQEGPGS LAAGESSLS ASTSVSDSSQ KKEEHNYSLF VSDNLGEQPT KCSPEEDEED EEDVDDEDHD EFGSEHELSENEEEEEEEEE DYEDDKDDDI SDTFSEPGYE NDSVEDLKEV TSISSRKR GK RRYFWEYSEQ LTPSQERML RPSEWNRDTL PSNMYQKNGL HHGKYAVKKS RRADVEDLTP NPKKLLQIGN ELRKL NKVIS DLTPVSELPL TARPRSRKEK NKLASRACRL KKKAQYEANK VKLWGLNTEY DNLLFVINSI KQEVN RVQN PRDERGPNMG QKLEILIKDT LGLPVAGQTS EFNQVLEKT AEGNPTGGLV GLRIPTSKV

## Product Details

---

Characteristics:	Human C5orf41 full-length ORF ( AAH41709.1, 1 a.a. - 639 a.a.) recombinant protein with GST-tag at N-terminal.
Purification:	in vitro wheat germ expression system

## Target Details

---

Target:	CREBRF
Alternative Name:	C5orf41 ( <a href="#">CREBRF Products</a> )
Background:	Full Gene Name: chromosome 5 open reading frame 41 Synonyms: DKFZp313F2319,DKFZp686G2059,LRF
Gene ID:	153222
Pathways:	<a href="#">Unfolded Protein Response</a>

## Application Details

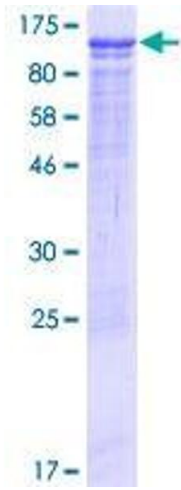
---

Application Notes:	Optimal working dilution should be determined by the investigator.
Comment:	Preparation method: in vitro, wheat germ expression system Product Quality tested by: 12.5% SDS-PAGE Stained with Coomassie Blue.
Restrictions:	For Research Use only

## Handling

---

Buffer:	50 mM Tris-HCl, 10 mM reduced Glutathione, pH =8.0 in the elution buffer.
Handling Advice:	Aliquot to avoid repeated freezing and thawing.
Storage:	-80 °C
Storage Comment:	Best use within three months from the date of receipt of this protein.



**Image 1.**