



[Go to Product page](#)

Datasheet for ABIN1347598

ABRACL/C6orf115 Protein (AA 1-81) (GST tag)

1 Image

Overview

Quantity:	10 µg
Target:	ABRACL/C6orf115 (ABRACL)
Protein Characteristics:	AA 1-81
Origin:	Human
Source:	Wheat germ
Protein Type:	Recombinant
Purification tag / Conjugate:	This ABRACL/C6orf115 protein is labelled with GST tag.
Application:	ELISA, Western Blotting (WB), Antibody Array (AA), Affinity Purification (AP)

Product Details

Purpose:	C6orf115 (Human) Recombinant Protein (P01)
Sequence:	MNVDHEVNLL VEEIHRLGSK NADGKLSVKF GVLFRDDKCA NLFEALVGTL KAAKRRKIVT YPGELLQGV HDDVDIILLQ D
Characteristics:	Human C6orf115 full-length ORF (AAH14953, 1 a.a. - 81 a.a.) recombinant protein with GST-tag at N-terminal.
Purification:	in vitro wheat germ expression system

Target Details

Target:	ABRACL/C6orf115 (ABRACL)
Alternative Name:	C6orf115 (ABRACL Products)

Target Details

Background: Full Gene Name: chromosome 6 open reading frame 115
Synonyms: HSPC280,PRO2013

Gene ID: 58527

Application Details

Application Notes: Optimal working dilution should be determined by the investigator.

Comment: Preparation method: in vitro, wheat germ expression system
Product Quality tested by: 12.5% SDS-PAGE Stained with Coomassie Blue.

Restrictions: For Research Use only

Handling

Buffer: 50 mM Tris-HCl, 10 mM reduced Glutathione, pH =8.0 in the elution buffer.

Handling Advice: Aliquot to avoid repeated freezing and thawing.

Storage: -80 °C

Storage Comment: Best use within three months from the date of receipt of this protein.

Images

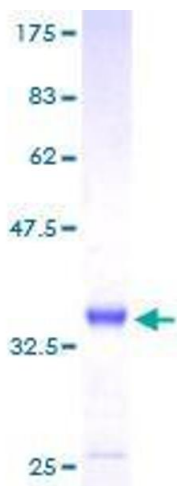


Image 1.