



[Go to Product page](#)

Datasheet for ABIN1347608

AKD1 Protein (AA 321-421) (GST tag)

1 Image

Overview

Quantity:	10 µg
Target:	AKD1 (ADK1)
Protein Characteristics:	AA 321-421
Origin:	Human
Source:	Wheat germ
Protein Type:	Recombinant
Purification tag / Conjugate:	This AKD1 protein is labelled with GST tag.
Application:	Antibody Array (AA), Affinity Purification (AP), ELISA, Western Blotting (WB)

Product Details

Purpose:	C6orf199 (Human) Recombinant Protein (Q01)
Sequence:	YKLIAPRYRW QRSKWGRTCP VNLKDGNIYS GLPDYSVSFL GKIYCLSSEE ALKPFLLNPR PYLLPPMPGP PCKVFILGPQ YSGKTTLCNM LAENYKGKVT N
Characteristics:	Human C6orf199 partial ORF (NP_659462, 321 a.a. - 421 a.a.) recombinant protein with GST-tag at N-terminal.
Purification:	in vitro wheat germ expression system

Target Details

Target:	AKD1 (ADK1)
Alternative Name:	C6orf199 (ADK1 Products)

Target Details

Background:	Full Gene Name: chromosome 6 open reading frame 199 Synonyms: FLJ42177,MGC26954,RP1-70A9.1,dJ70A9.1
Gene ID:	221264
NCBI Accession:	NM_145025

Application Details

Application Notes:	Optimal working dilution should be determined by the investigator.
Comment:	Preparation method: in vitro, wheat germ expression system Product Quality tested by: 12.5% SDS-PAGE Stained with Coomassie Blue.
Restrictions:	For Research Use only

Handling

Buffer:	50 mM Tris-HCl, 10 mM reduced Glutathione, pH =8.0 in the elution buffer.
Handling Advice:	Aliquot to avoid repeated freezing and thawing.
Storage:	-80 °C
Storage Comment:	Best use within three months from the date of receipt of this protein.

Images

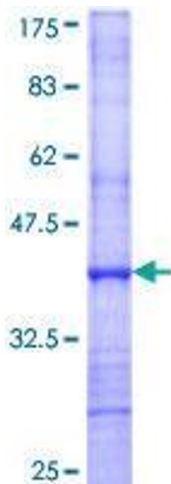


Image 1.